

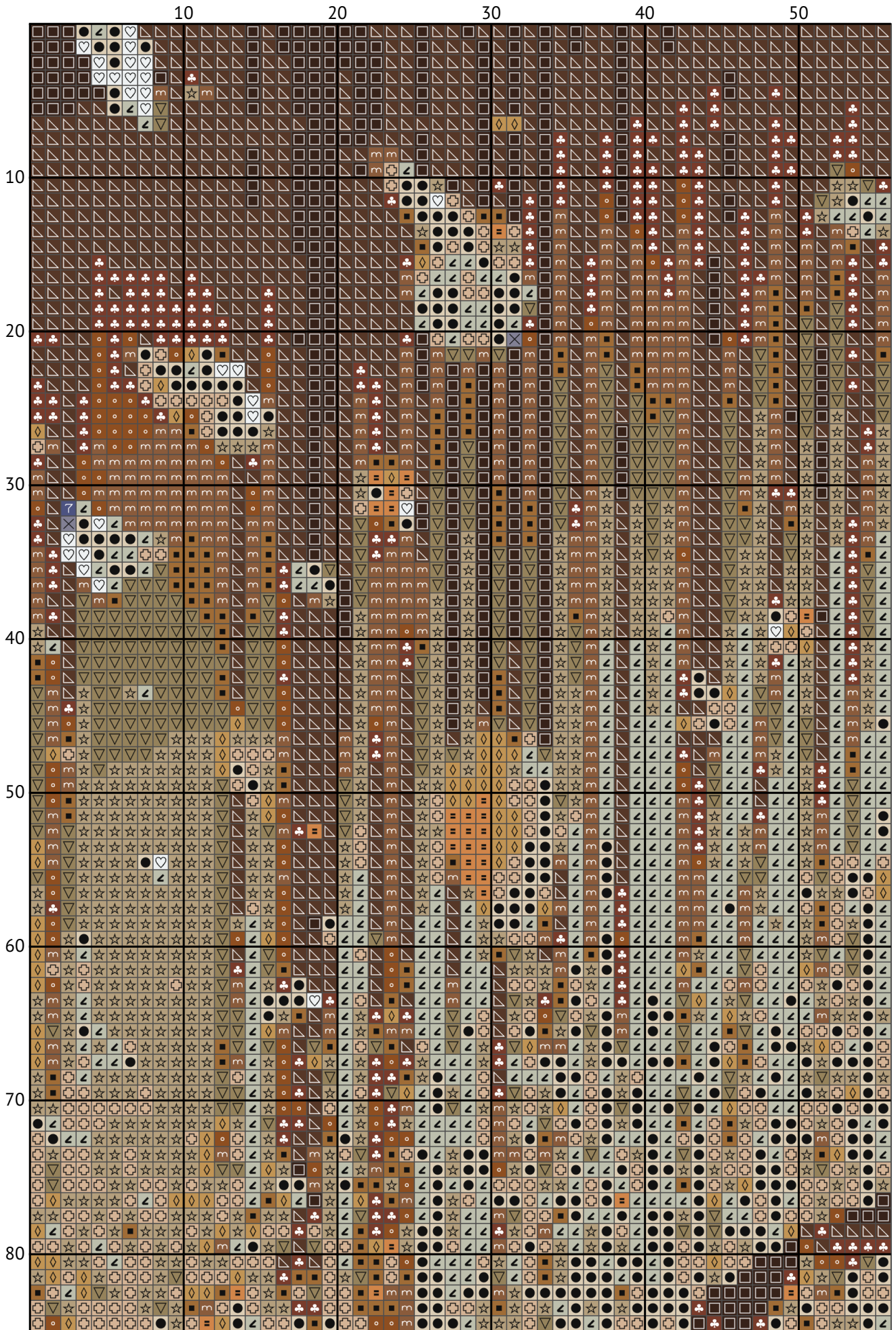
Ballerina

Cross stitch chart

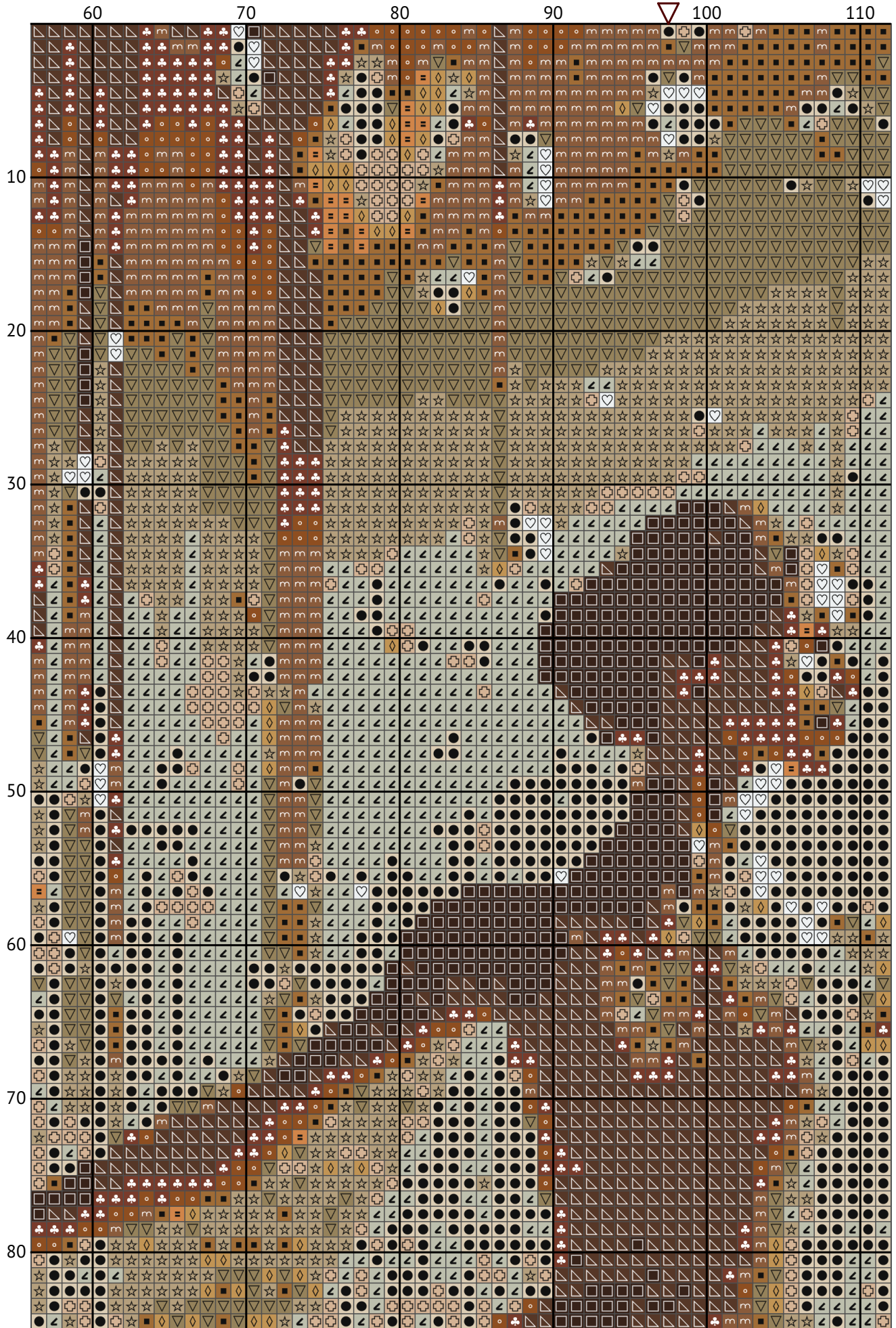


Design size: 195 x 195 stitches

Ballerina



Ballerina



Ballerina

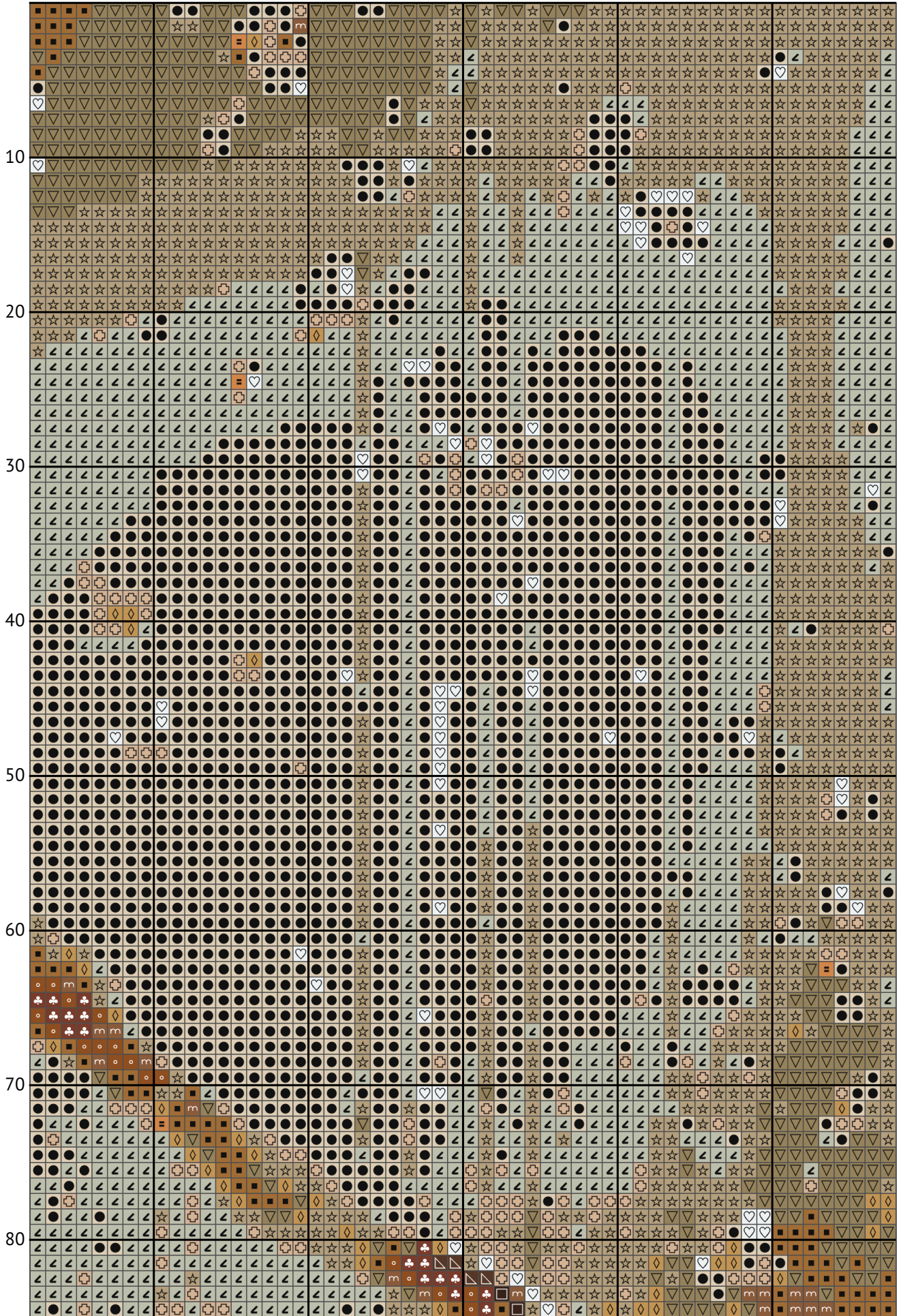
120

130

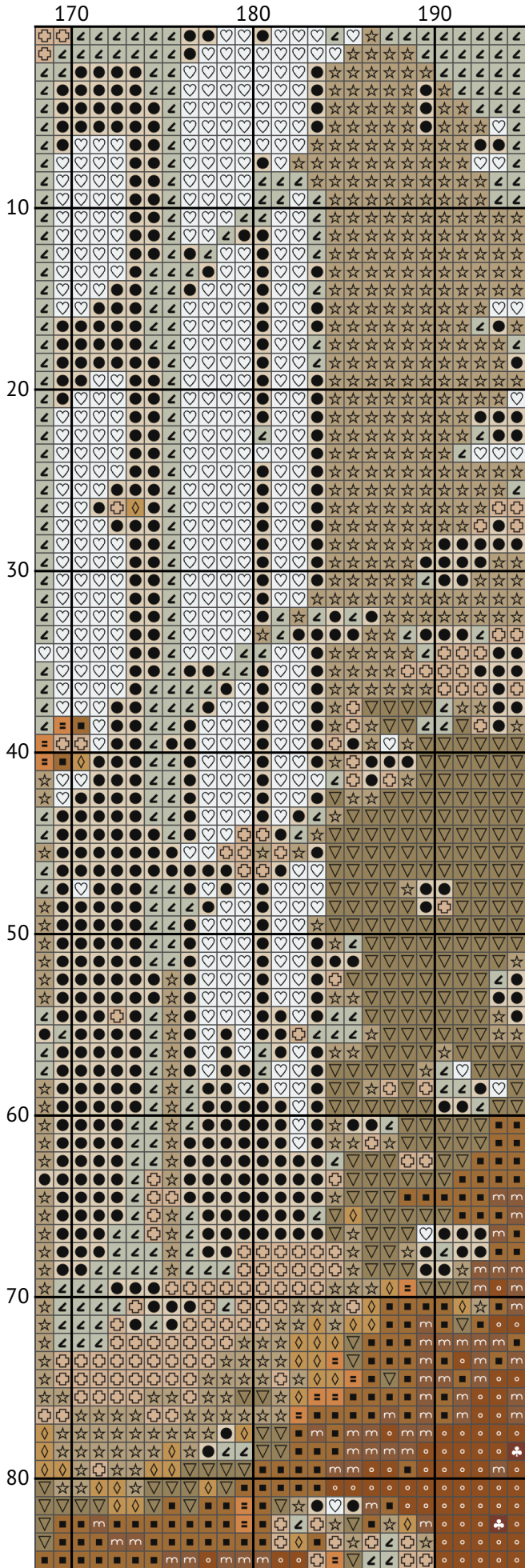
140

150

160



Ballerina



Ballerina

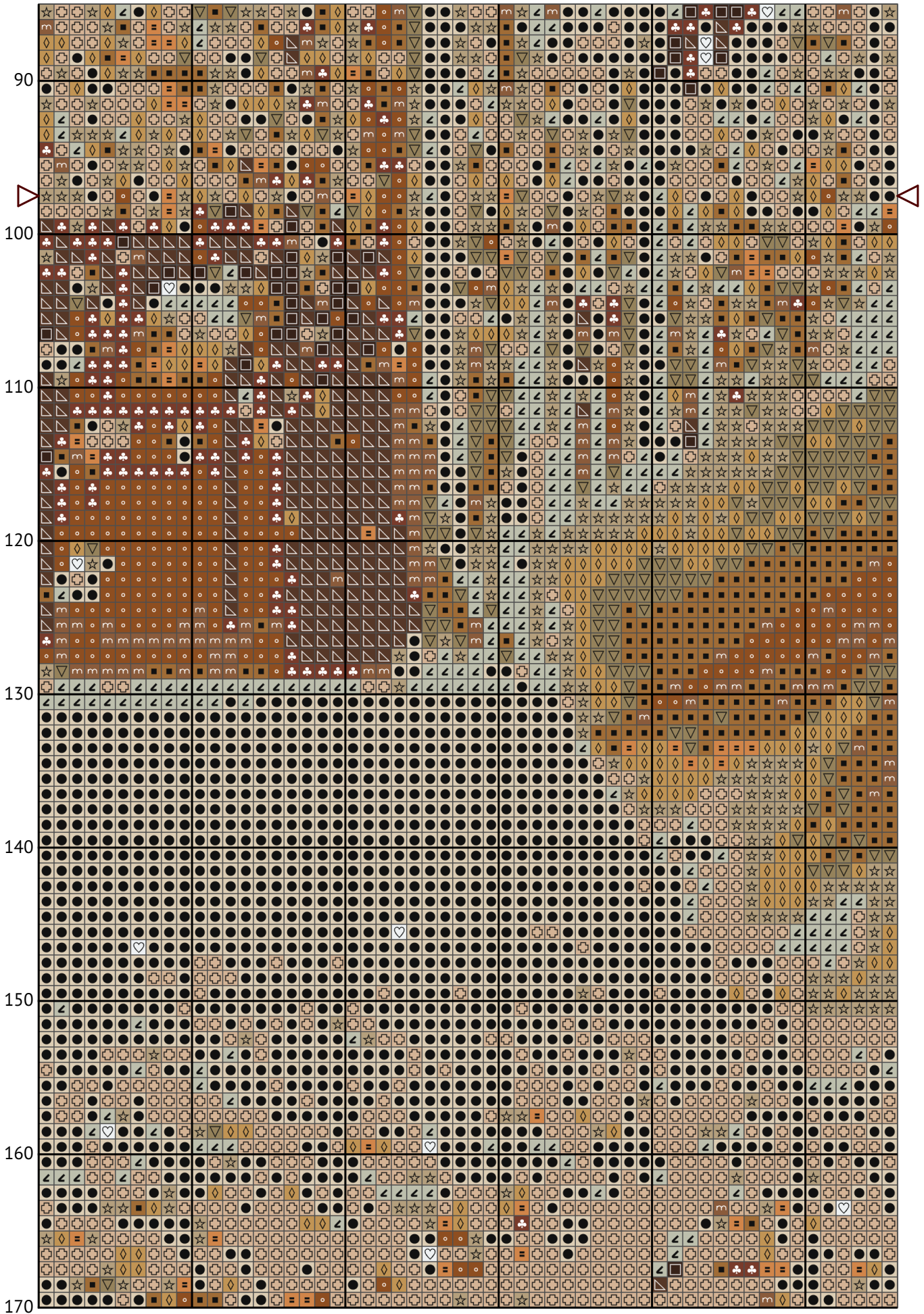
10

20

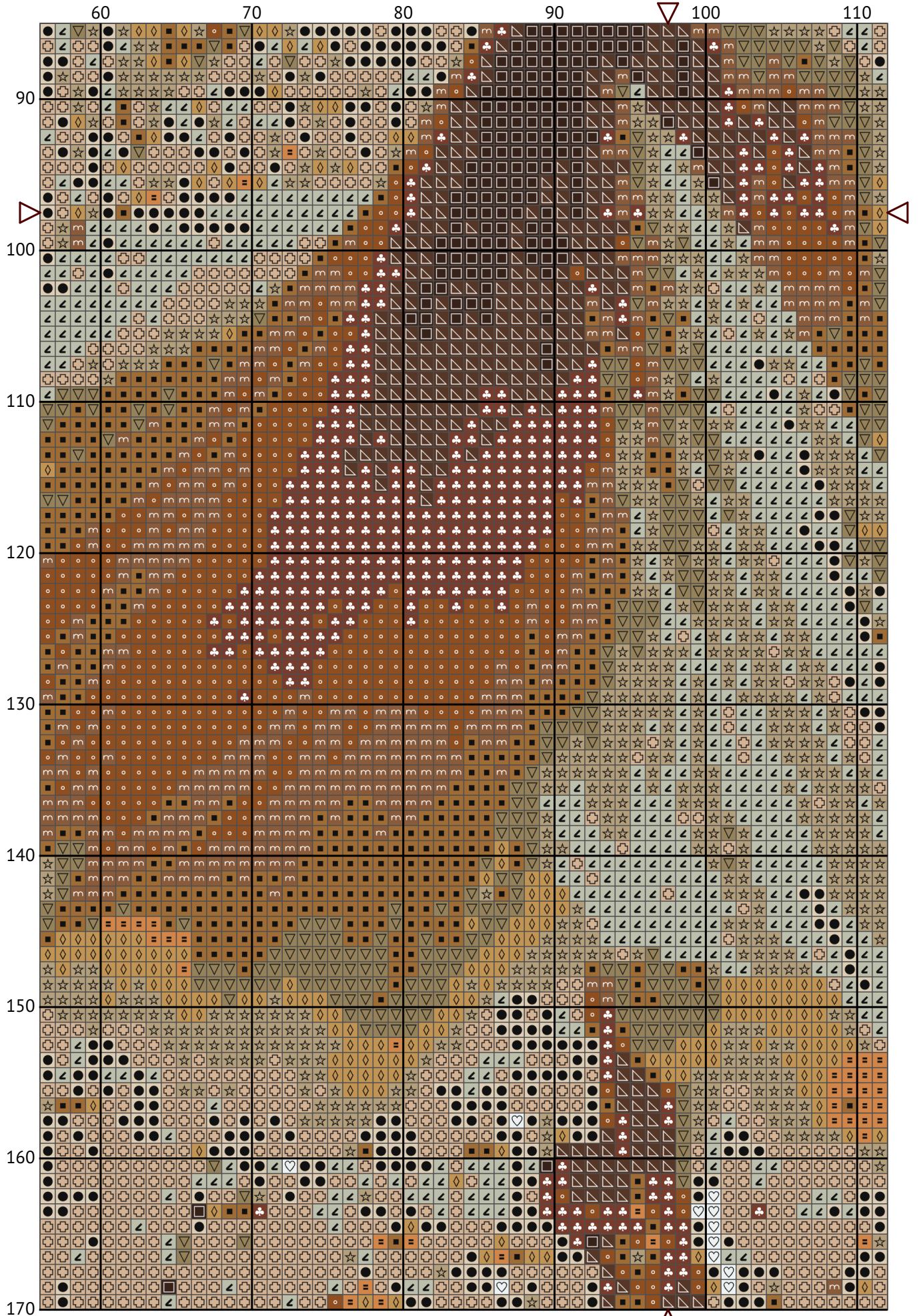
30

40

50

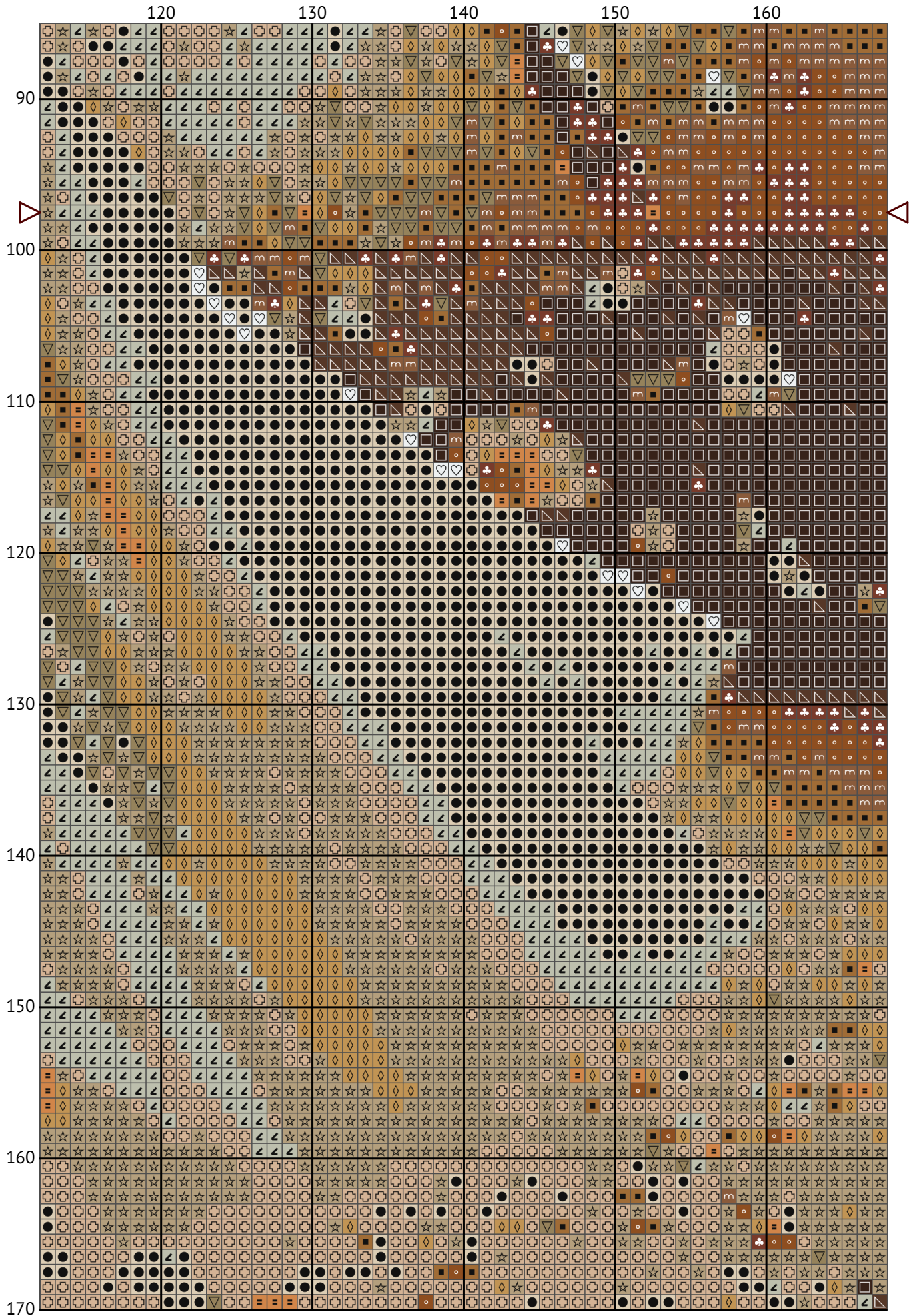


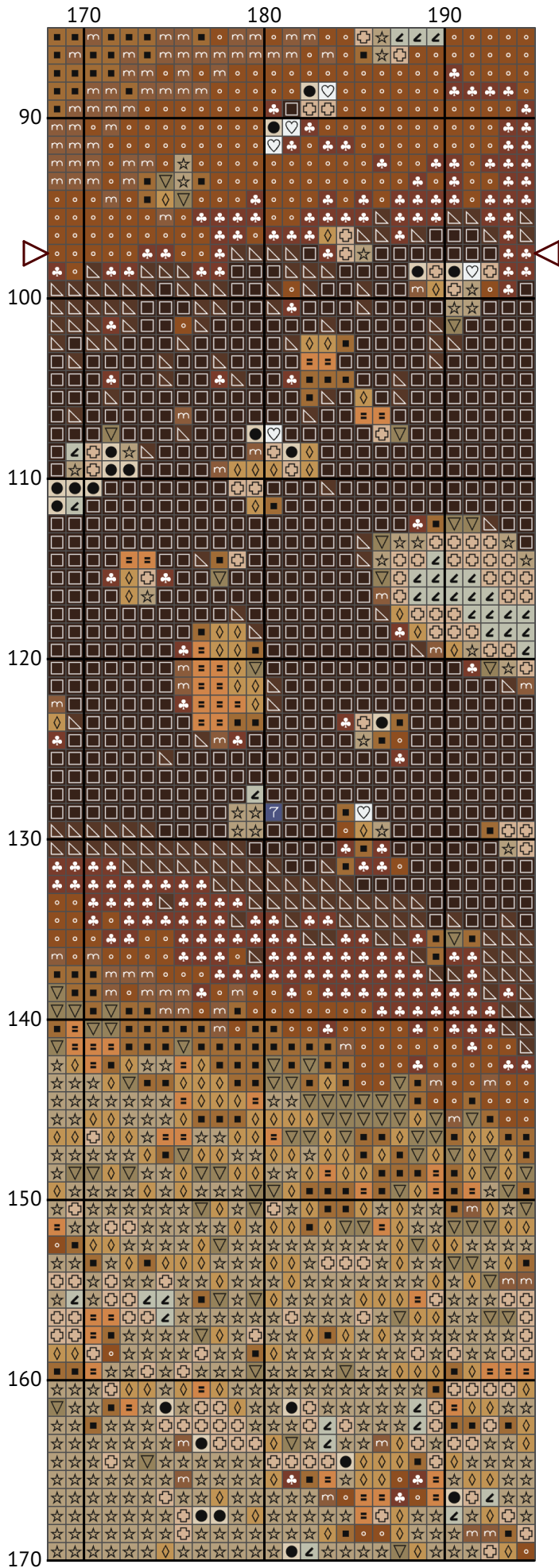
Ballerina



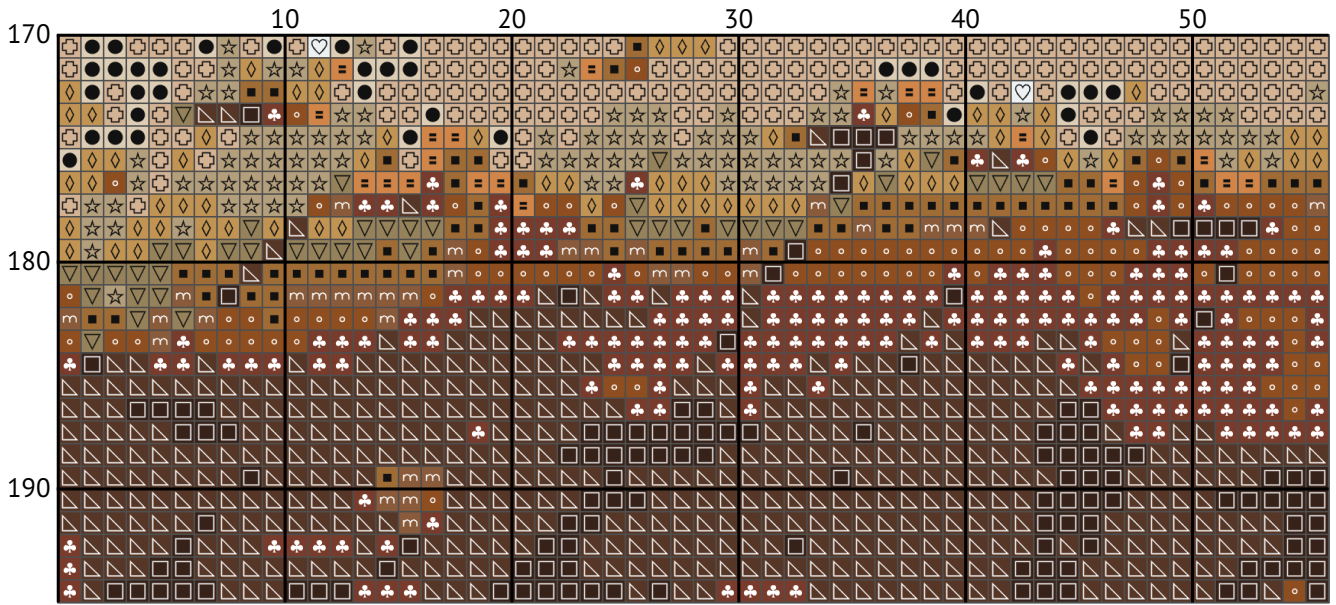
Needle-Thread.space

Ballerina

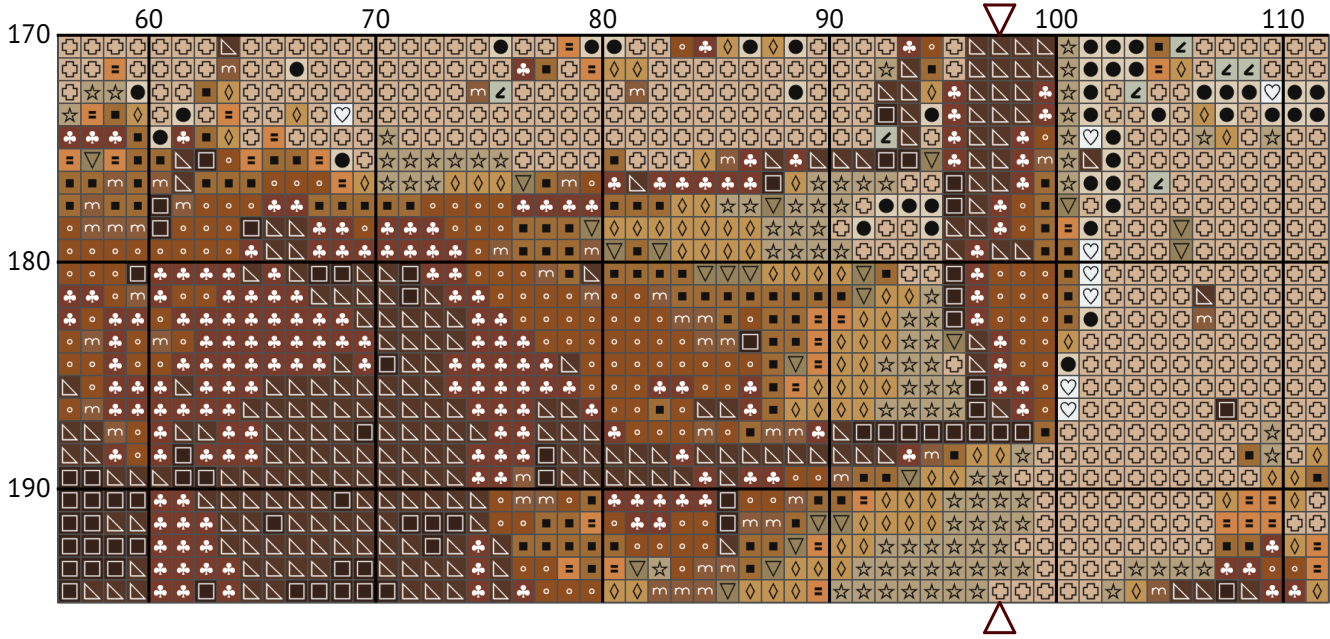




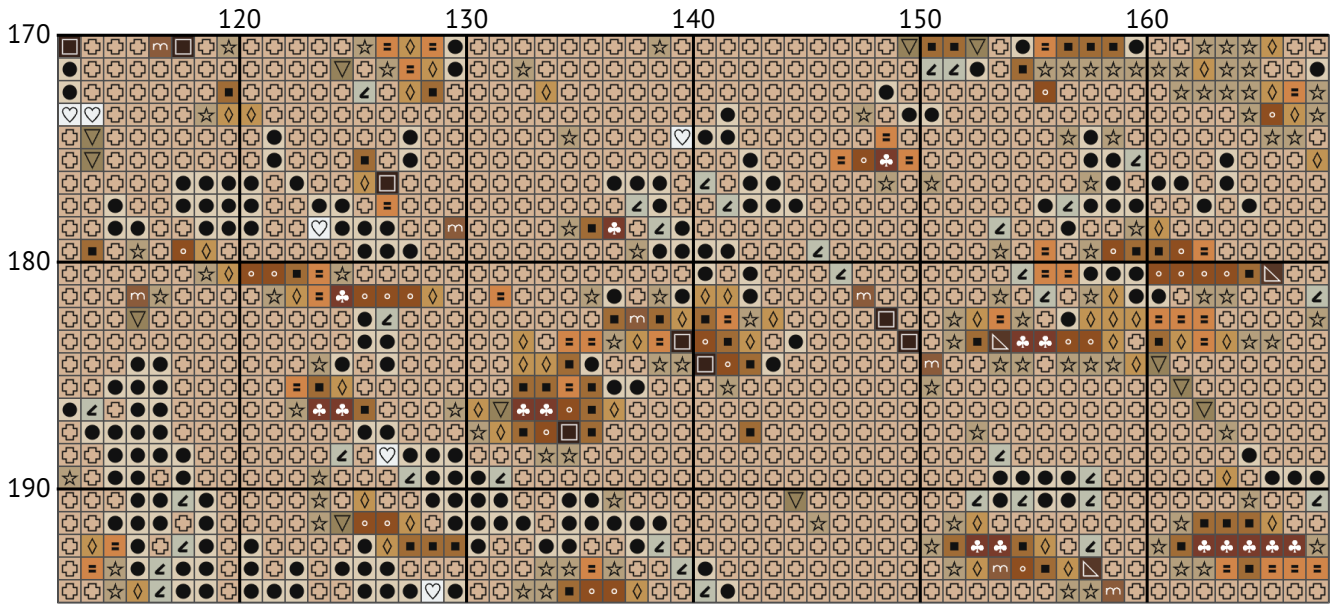
Ballerina



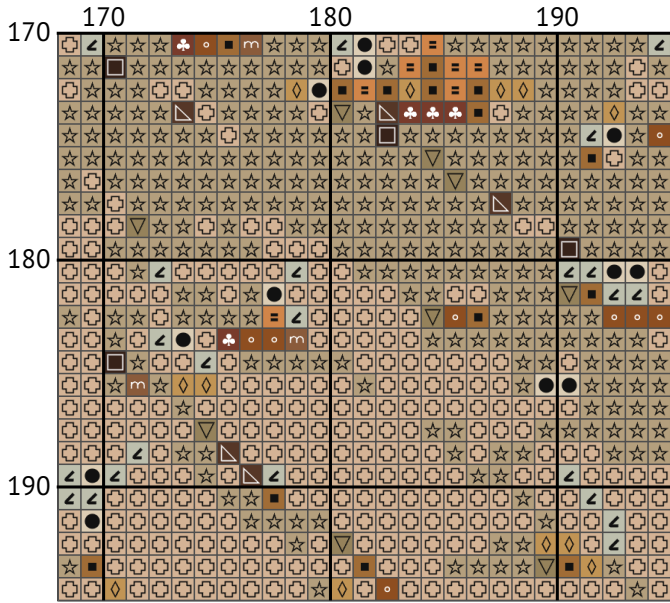
Ballerina



Ballerina



Ballerina



Ballerina
Floss list for crosses (DMC)

N	Symbol	Number	Name	Stitches
1		DMC 161	Gray Blue	2
2		DMC 167	Yellow Beige - Very Dark	1850
3		DMC 318	Steel Gray - Light	2
4		DMC 422	Hazelnut Brown - Light	1428
5		DMC 435	Brown - Very Light	1702
6		DMC 437	Tan - Light	347
7		DMC 543	Beige - Ultra Very Light	4868
8		DMC 632	Desert Sand - Ultra Very Dark	1701
9		DMC 838	Beige Brown - Very Dark	2150
10		DMC 839	Beige Brown - Dark	3215
11		DMC 3024	Brown Gray - Very Light	3998
12		DMC 3032	Mocha Brown - Medium	2399
13		DMC 3033	Mocha Brown - Very Light	6246
14		DMC 3782	Mocha Brown - Light	5742
15		DMC 3863	Mocha Beige - Medium	1729
16		DMC BLANK	White	646