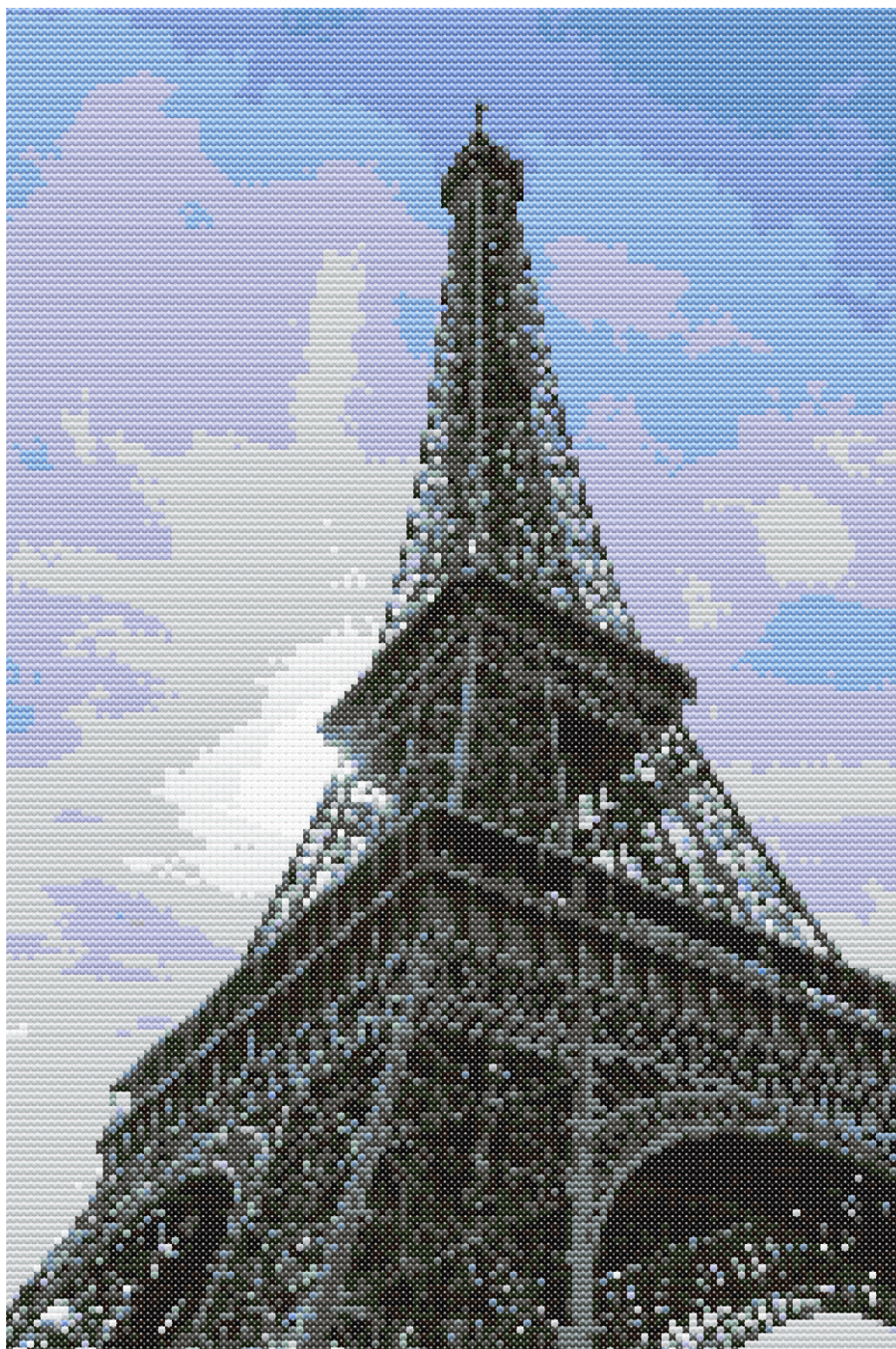


# Eiffel Tower

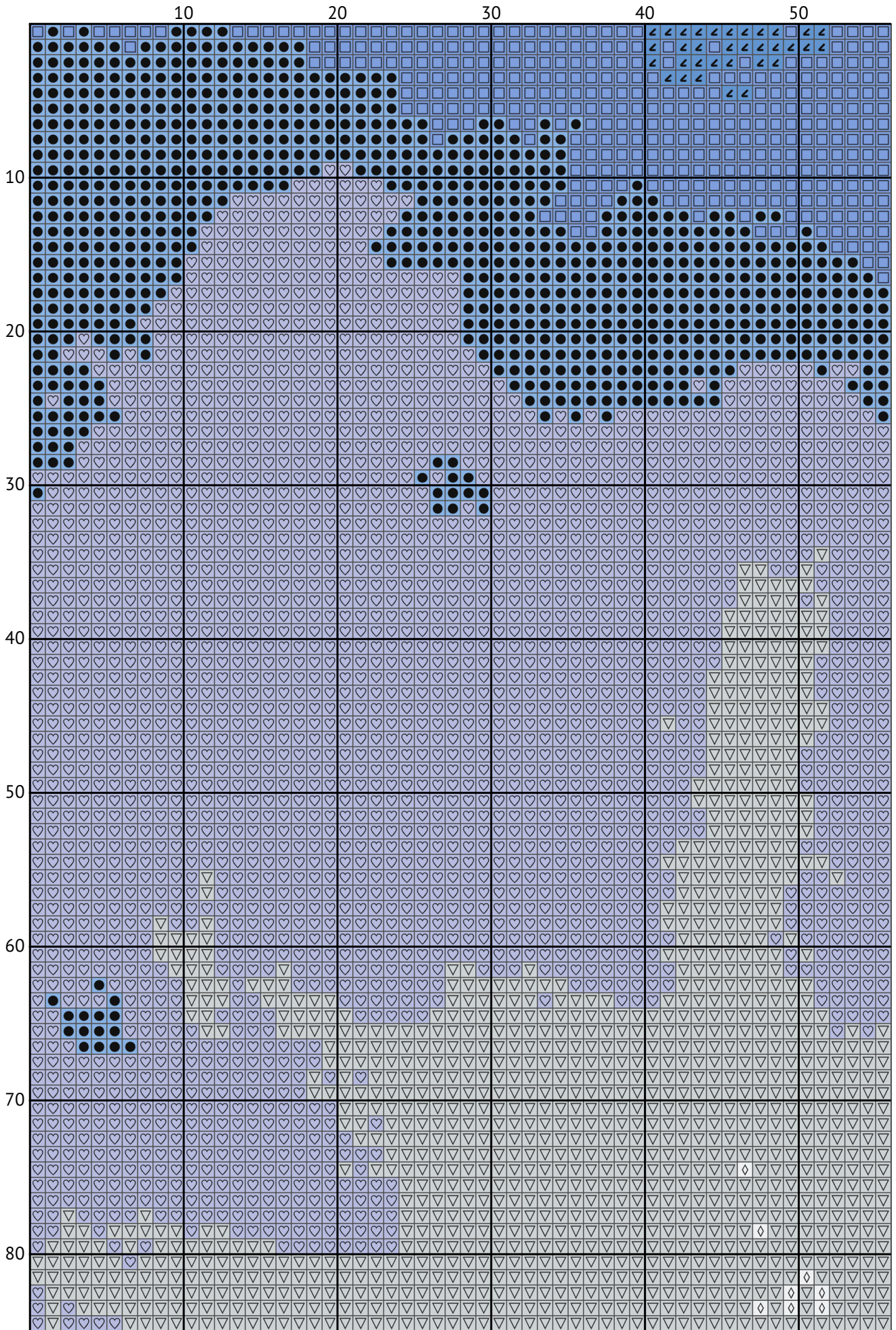
Cross stitch chart

---

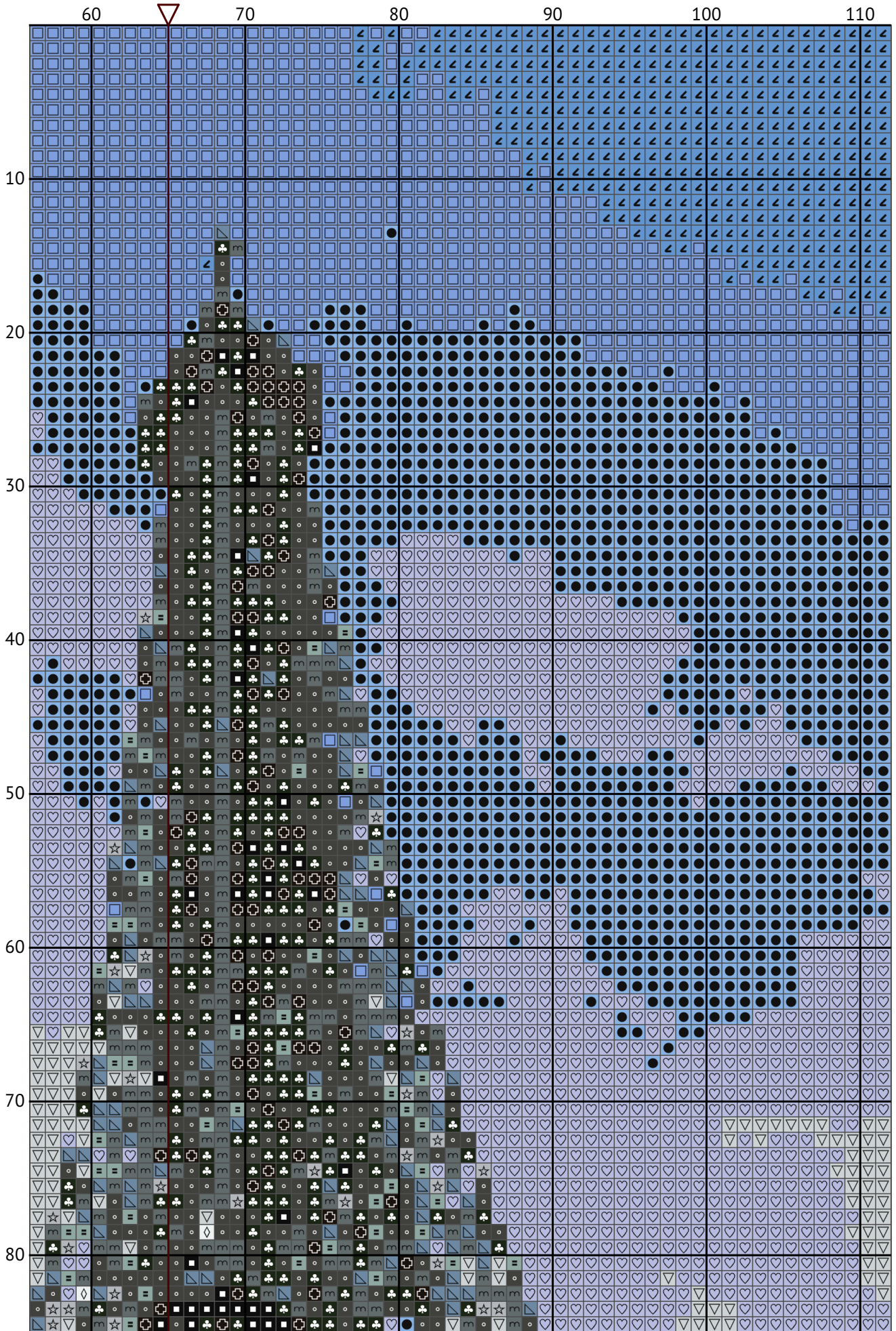


Design size: 130 x 195 stitches

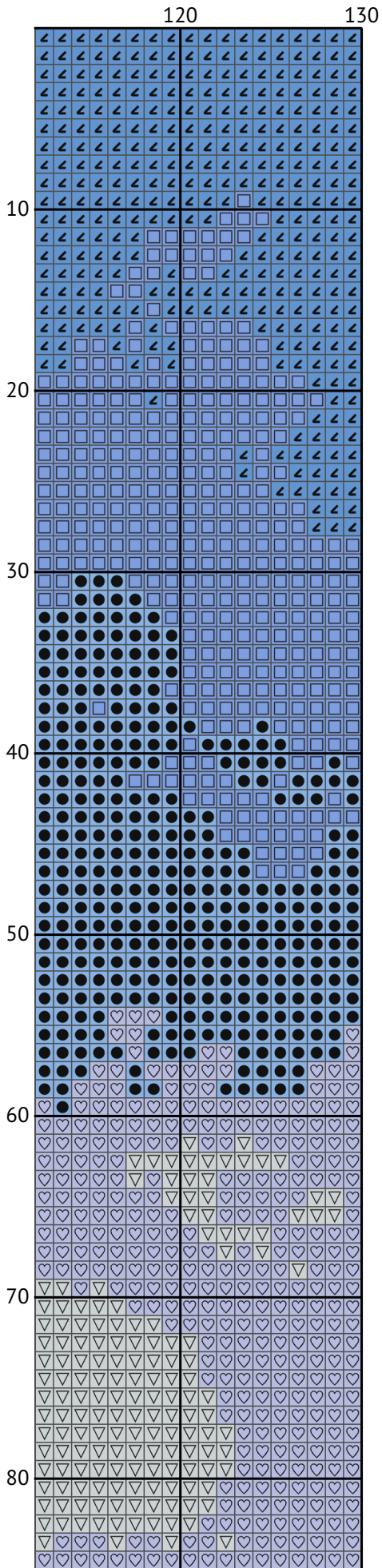
Eiffel Tower



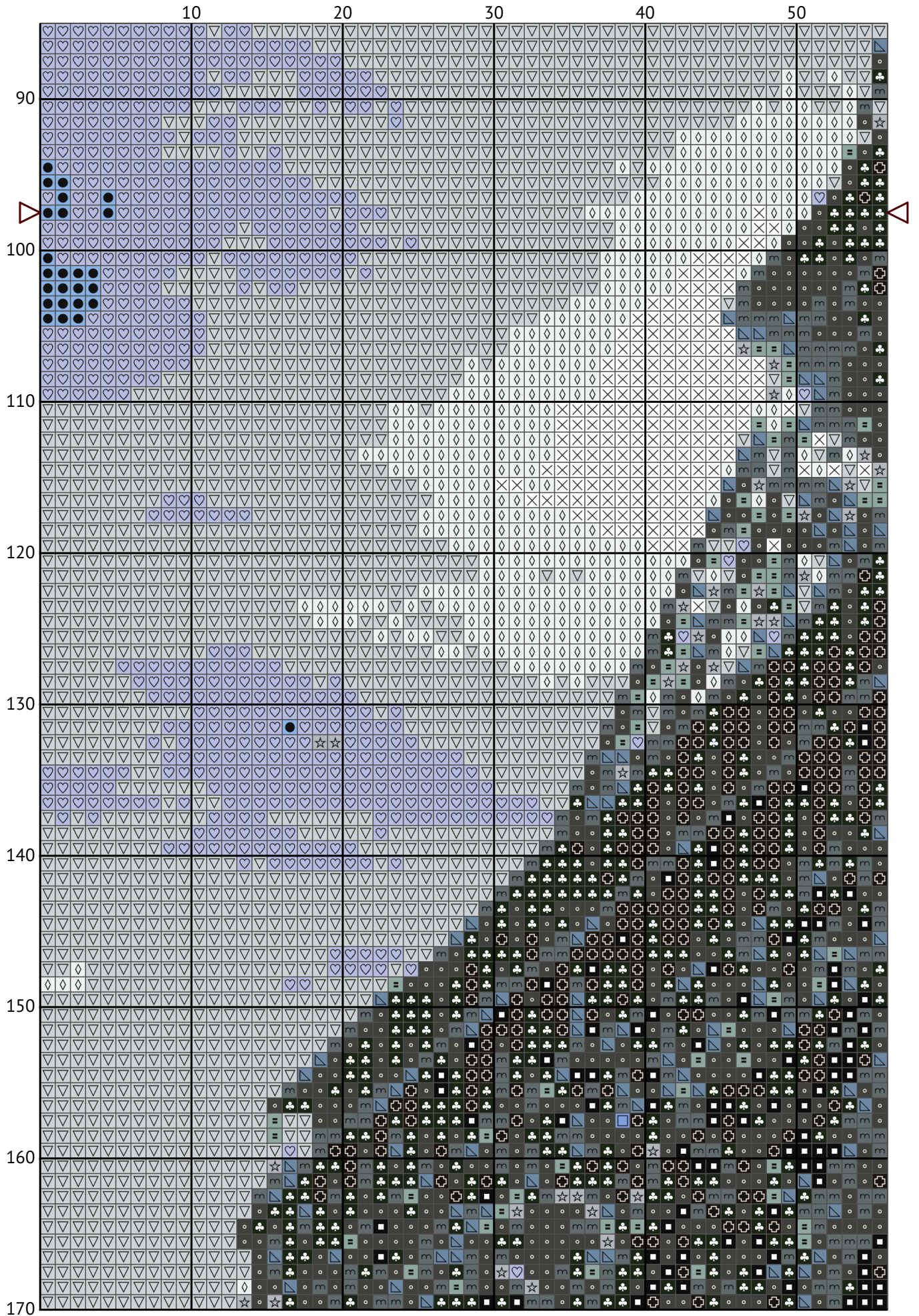
# Eiffel Tower



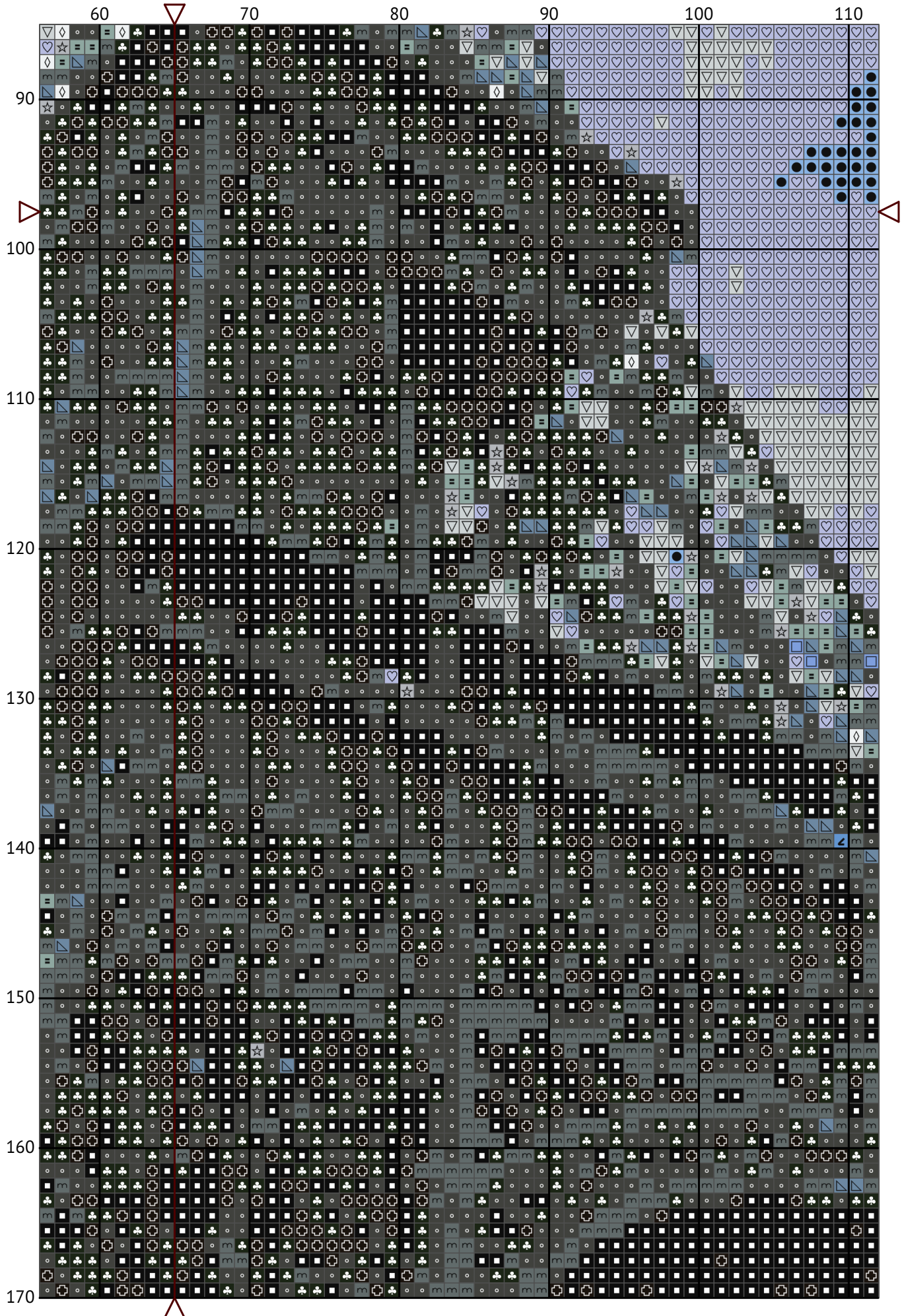
Eiffel Tower



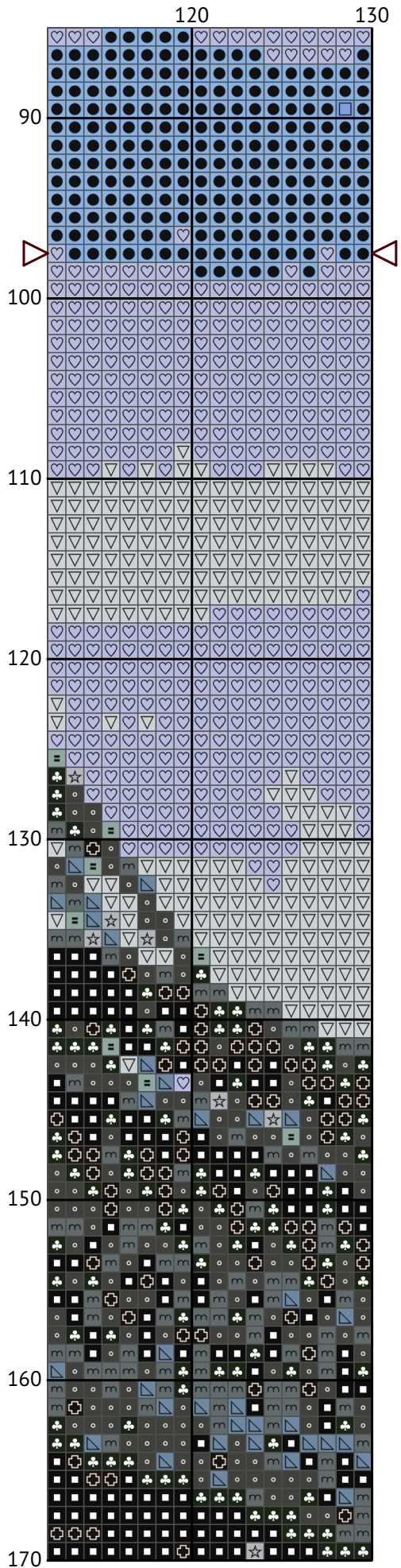
# Eiffel Tower



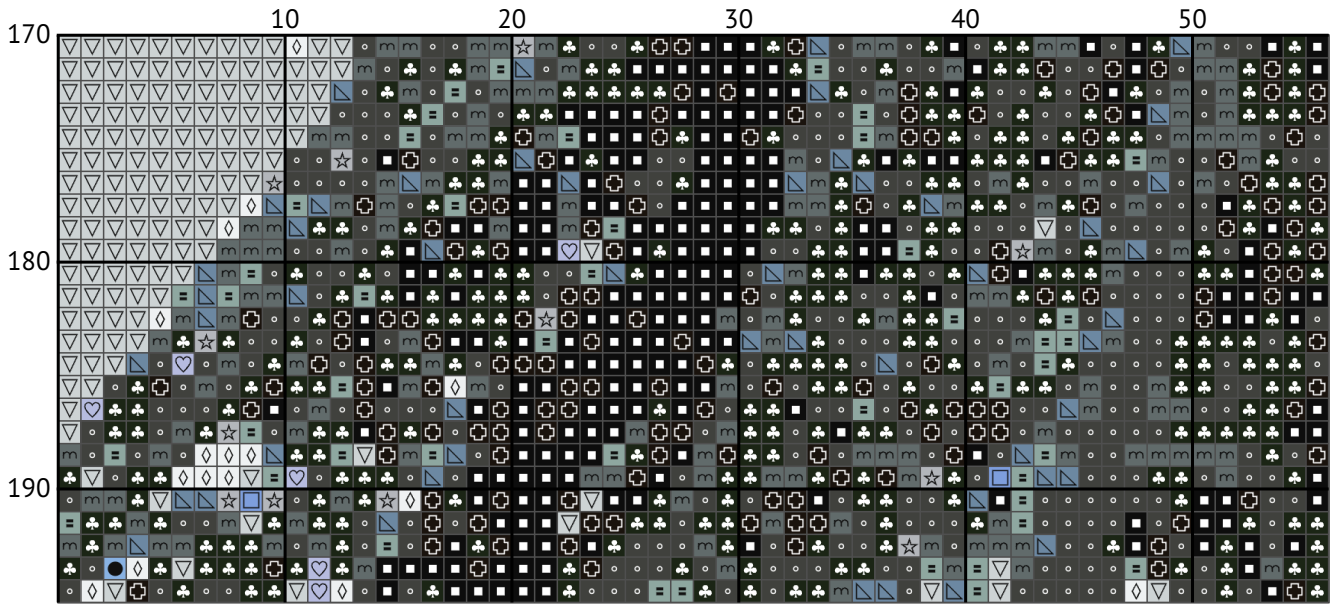
Eiffel Tower



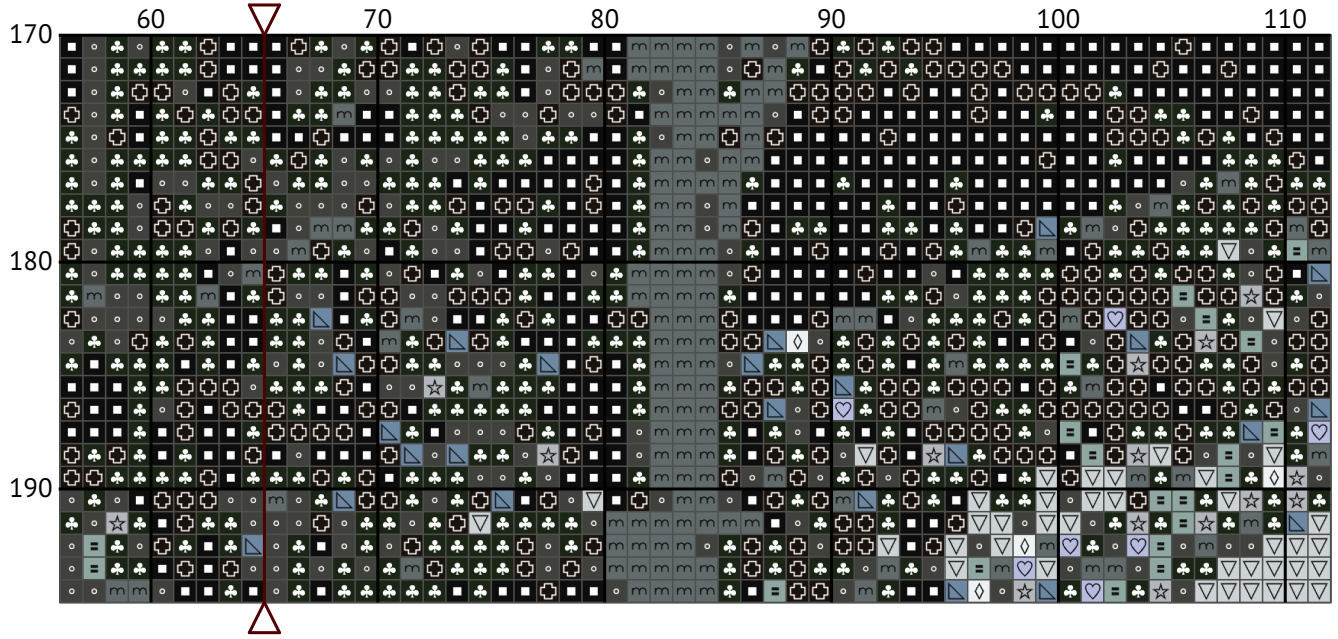
Eiffel Tower



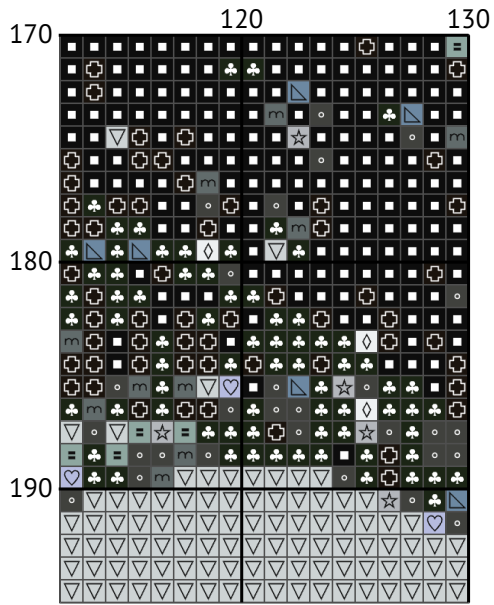
Eiffel Tower

































Eiffel Tower



Eiffel Tower



Eiffel Tower  
Floss list for crosses (DMC)

N	Symbol	Number	Name	Stitches
1		 DMC 02	Tin	135
2		 DMC 169	Pewter - Light	1472
3		 DMC 310	Black	1892
4		 DMC 535	Ash Gray - Very Light	2726
5		 DMC 762	Pearl Gray - Very Light	3933
6		 DMC 794	Cornflower Blue - Light	1541
7		 DMC 813	Blue - Light	773
8		 DMC 927	Gray Green - Light	251
9		 DMC 932	Antique Blue - Light	406
10		 DMC 934	Avocado Green - Black	2209
11		 DMC 3325	Baby Blue - Light	2588
12		 DMC 3371	Black Brown	1464
13		 DMC 3747	Blue Violet - Very Light	5304
14		 DMC B5200	Snow White	190
15		 DMC BLANK	White	466