

# Snowy owl

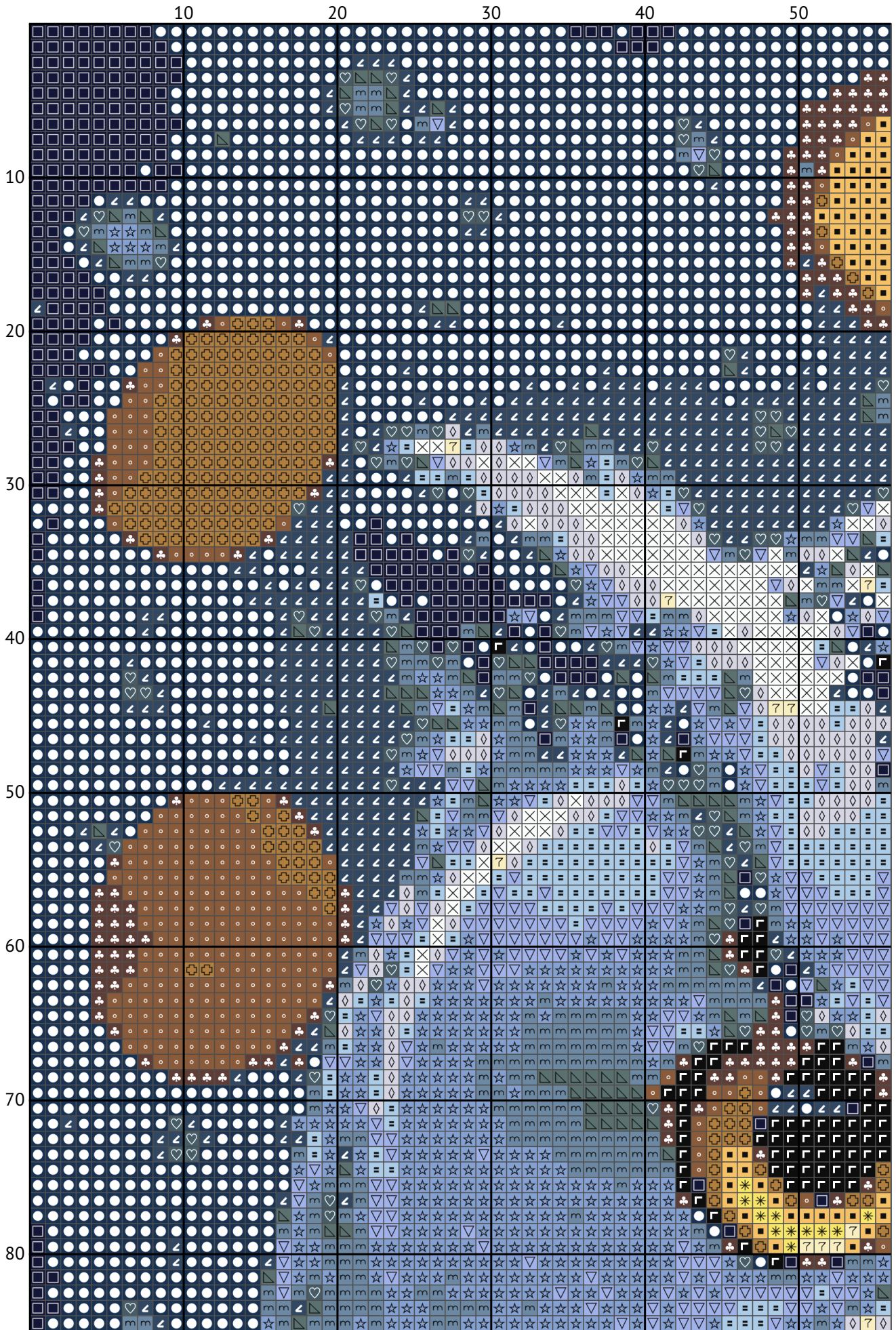
Cross stitch chart

---

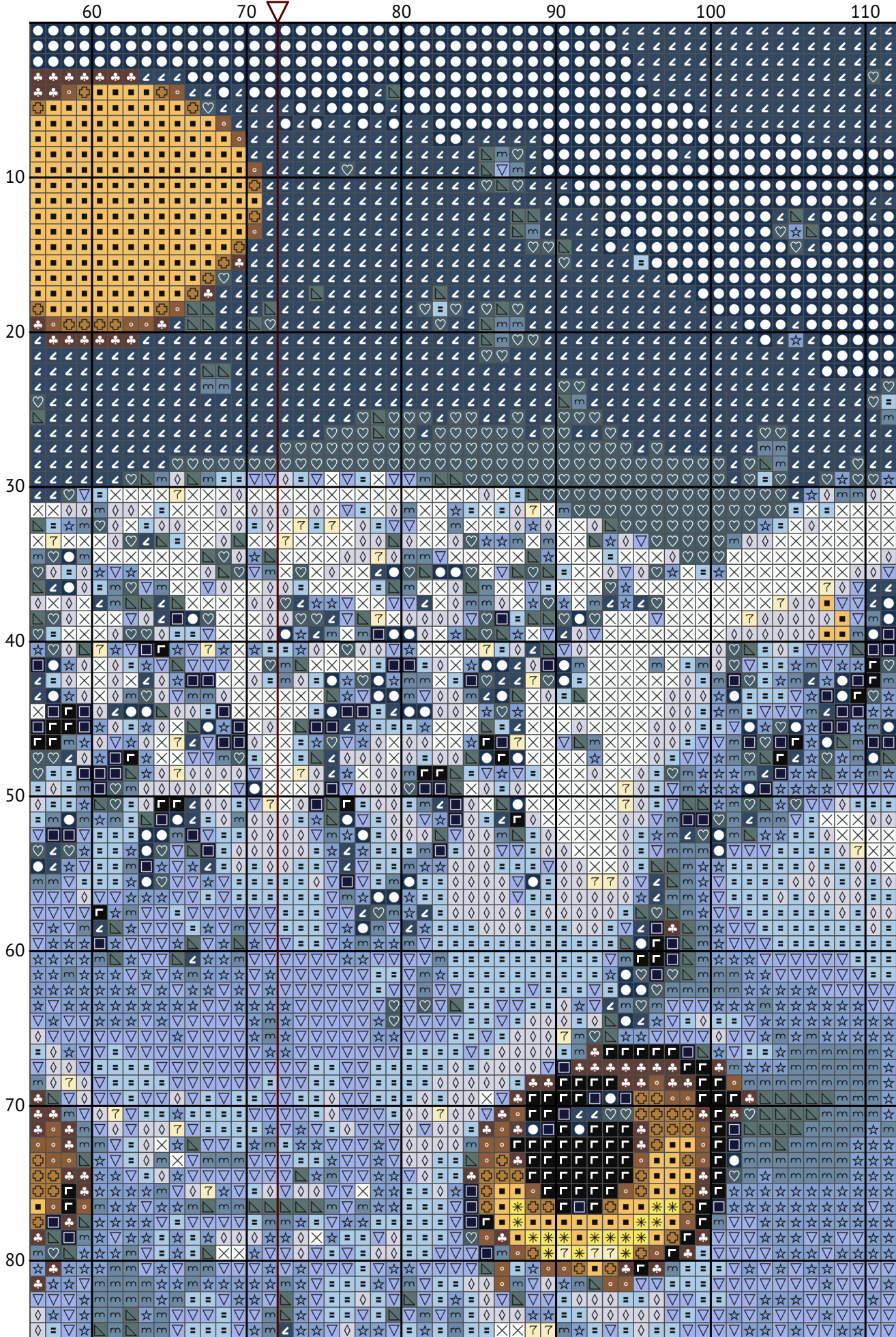


Design size: 144 x 192 stitches

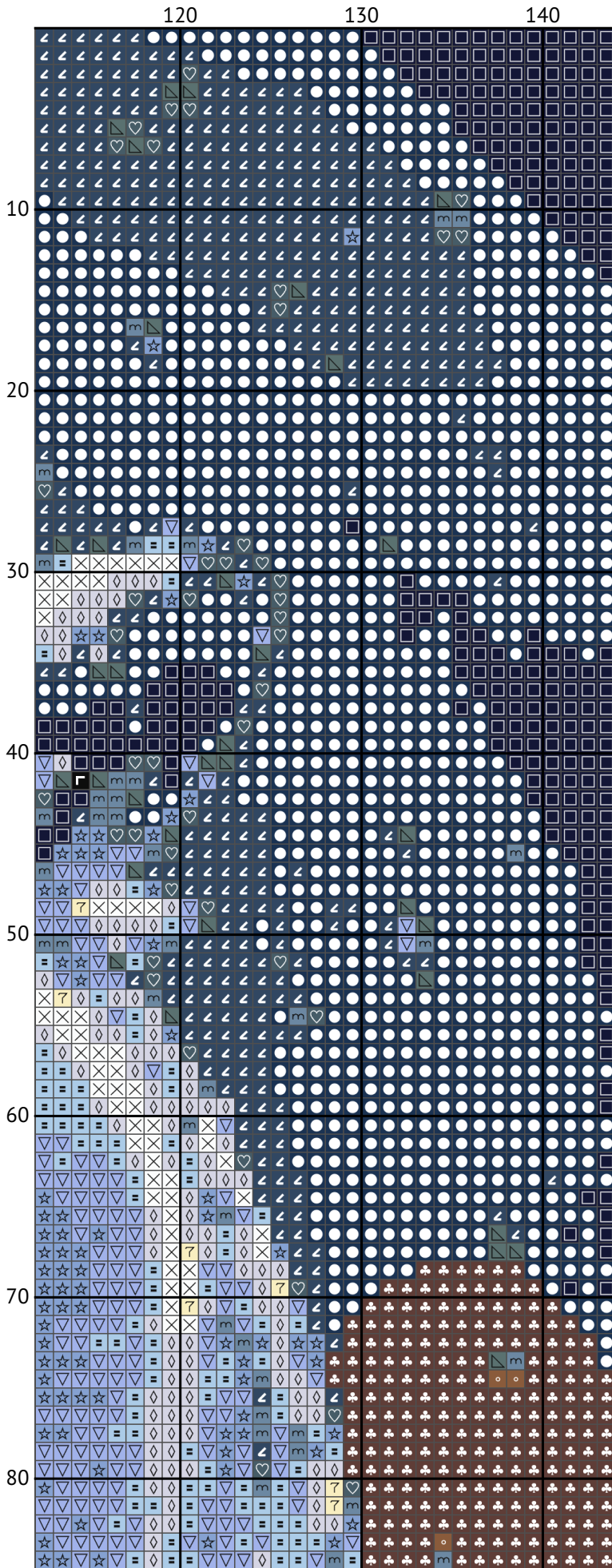
Snowy owl



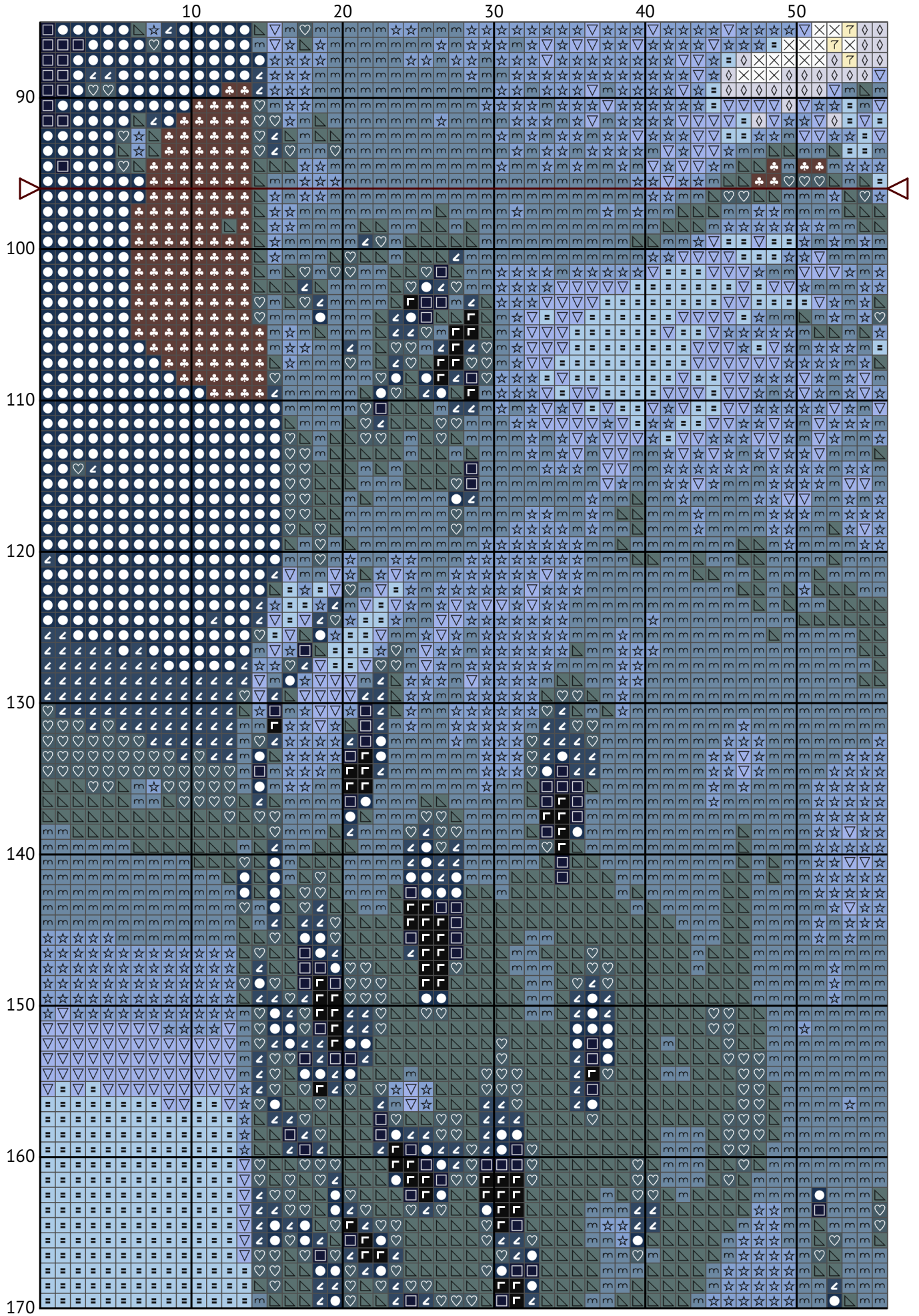
Snowy owl



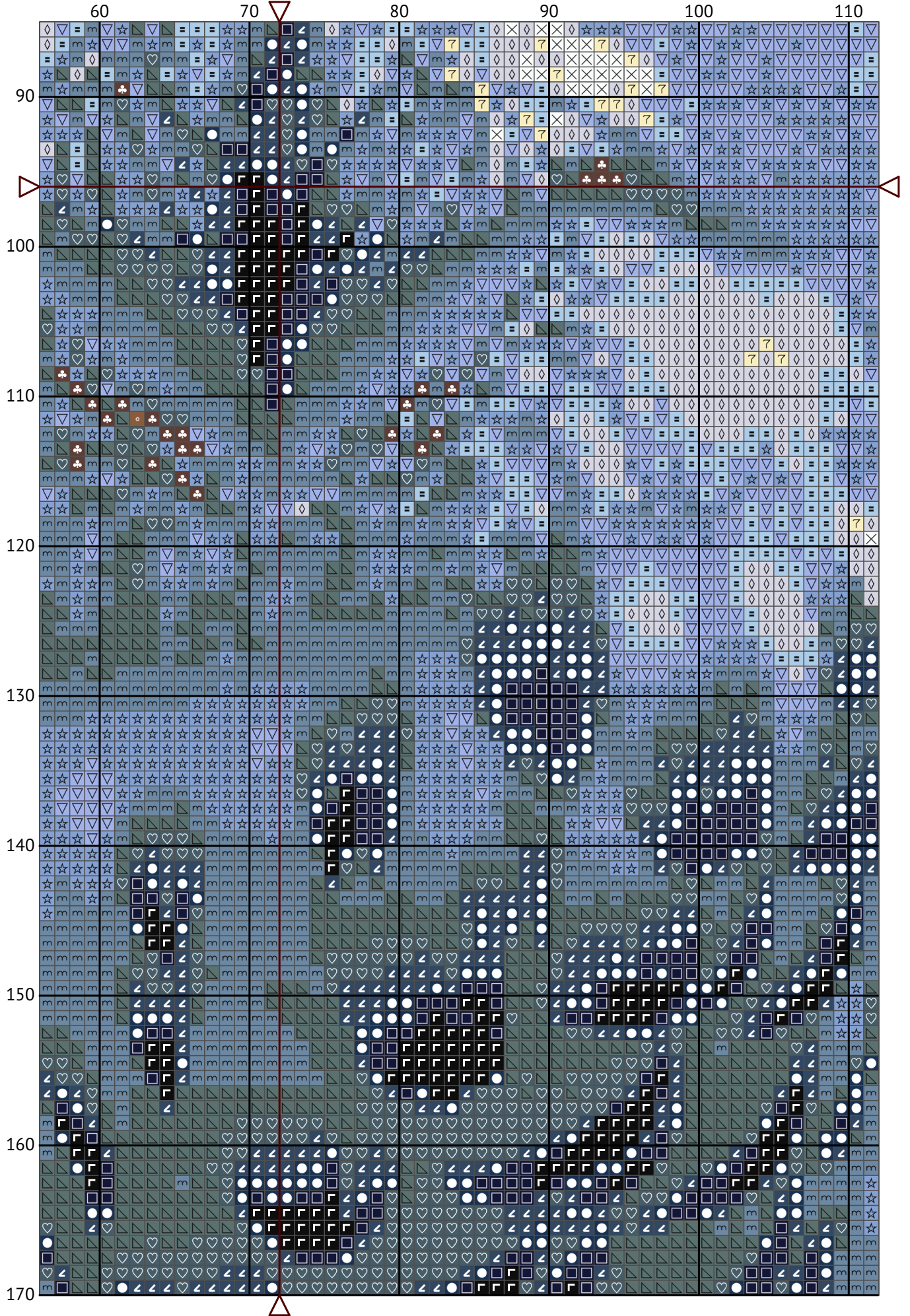
Snowy owl



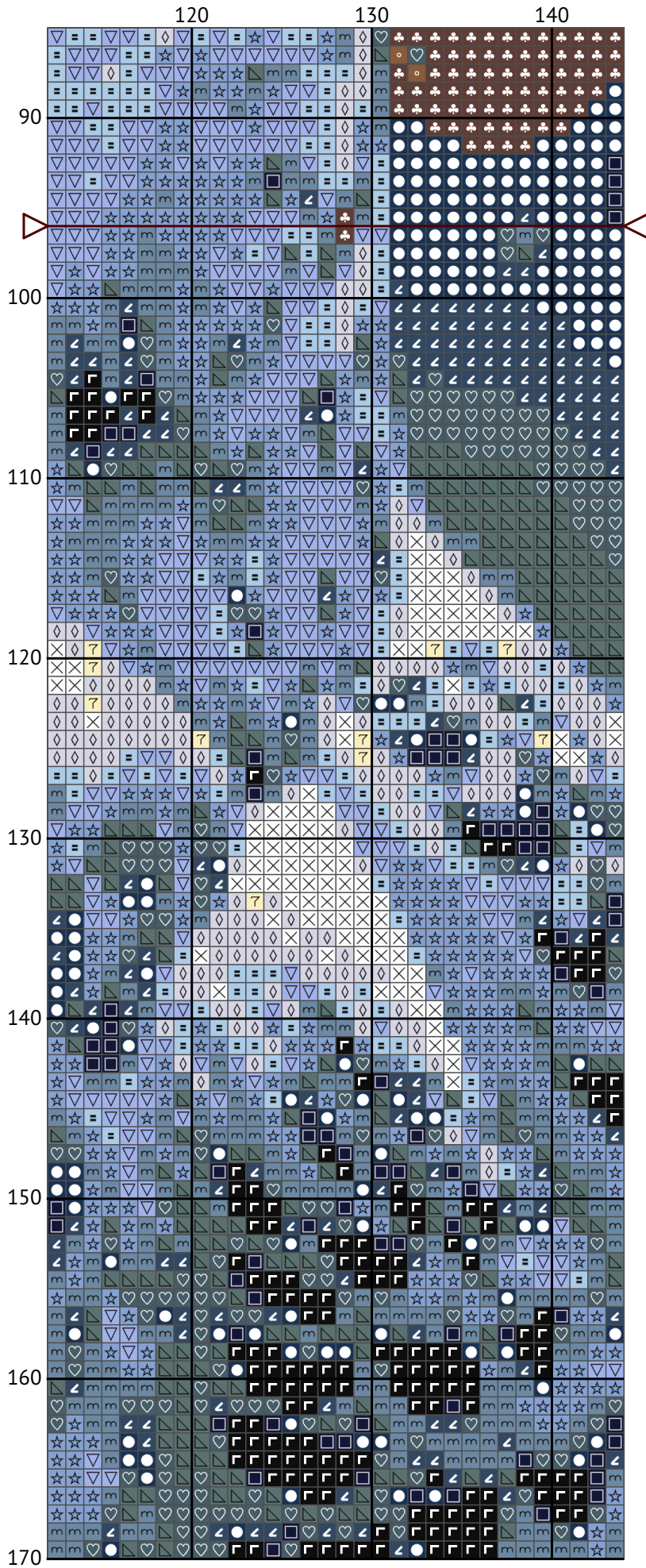
Snowy owl



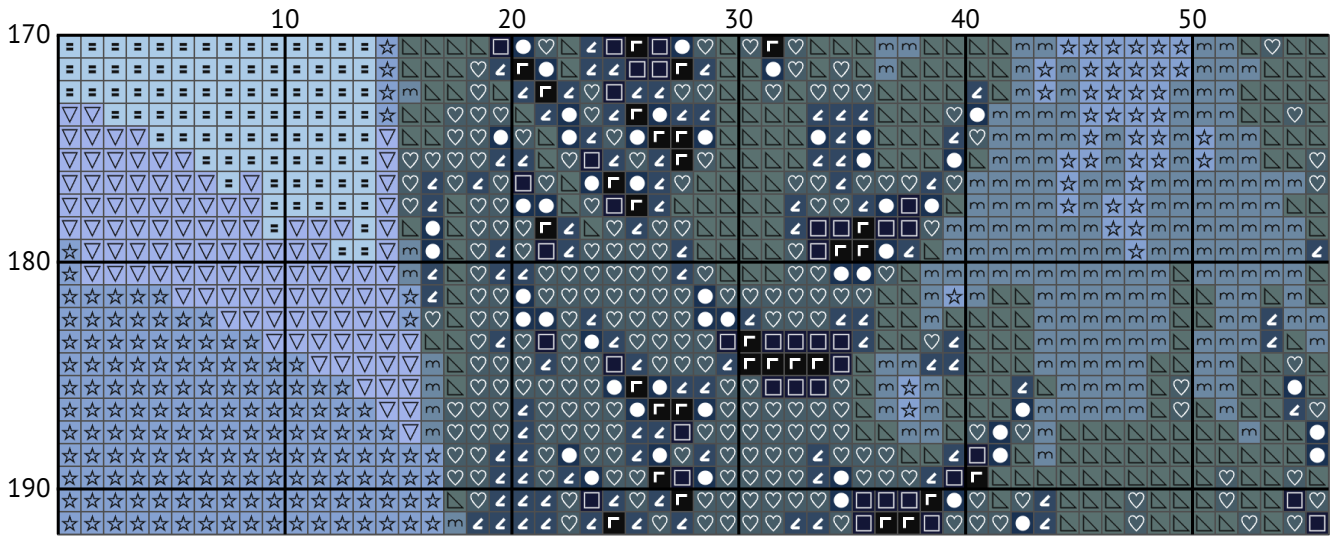
Snowy owl



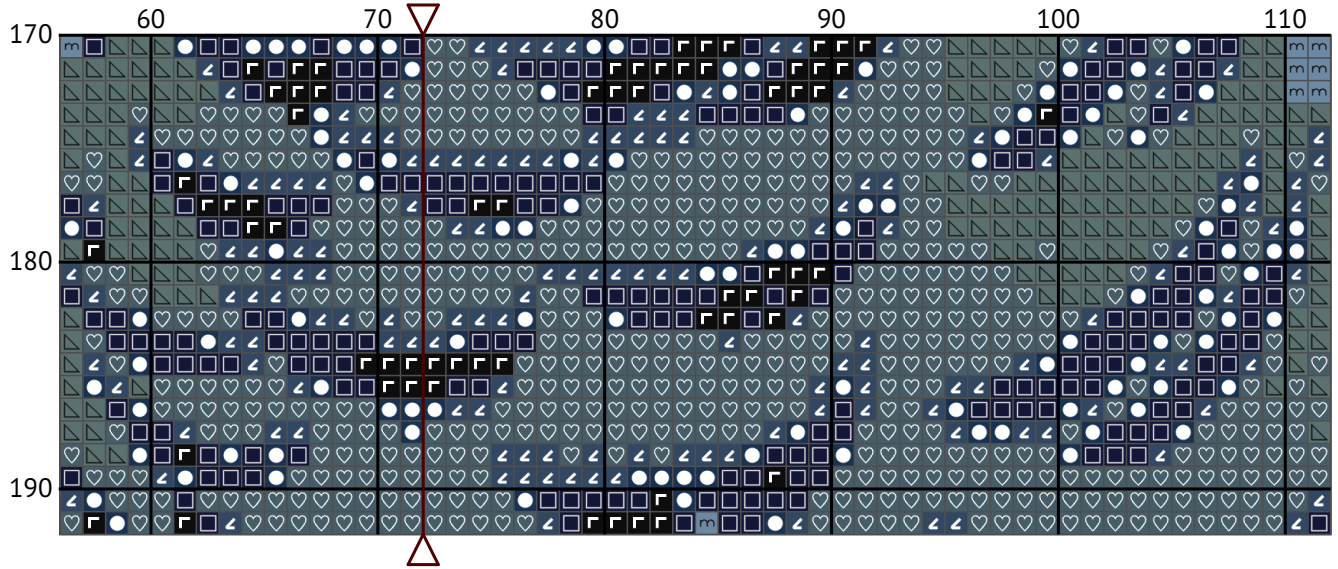
Snowy owl



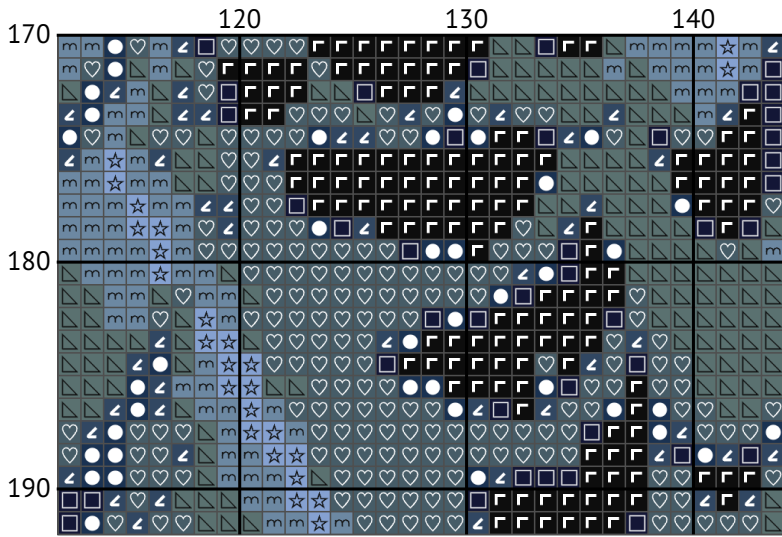
Snowy owl







































Snowy owl



Snowy owl



Snowy owl  
Floss list for crosses DMC

N	Symbol	Number	Name	Stitches
1		 DMC 27	Violet - White	1056
2		 DMC 157	Cornflower Blue - Very Light	3010
3		 DMC 310	Black	822
4		 DMC 341	Blue Violet - Light	2021
5		 DMC 727	Topaz - Very Light	28
6		 DMC 746	Off White	86
7		 DMC 779	Cocoa - Dark	674
8		 DMC 823	Navy Blue - Dark	1289
9		 DMC 926	Gray Green - Medium	2673
10		 DMC 930	Antique Blue - Dark	2853
11		 DMC 932	Antique Blue - Light	3376
12		 DMC 3750	Antique Blue - Very Dark	4440
13		 DMC 3752	Antique Blue - Very Light	1466
14		 DMC 3768	Gray Green - Dark	2332
15		 DMC 3828	Hazelnut Brown	259
16		 DMC 3855	Autumn Gold - Light	265
17		 DMC 3863	Mocha Beige - Medium	291
18		 DMC B5200	Snow White	707