

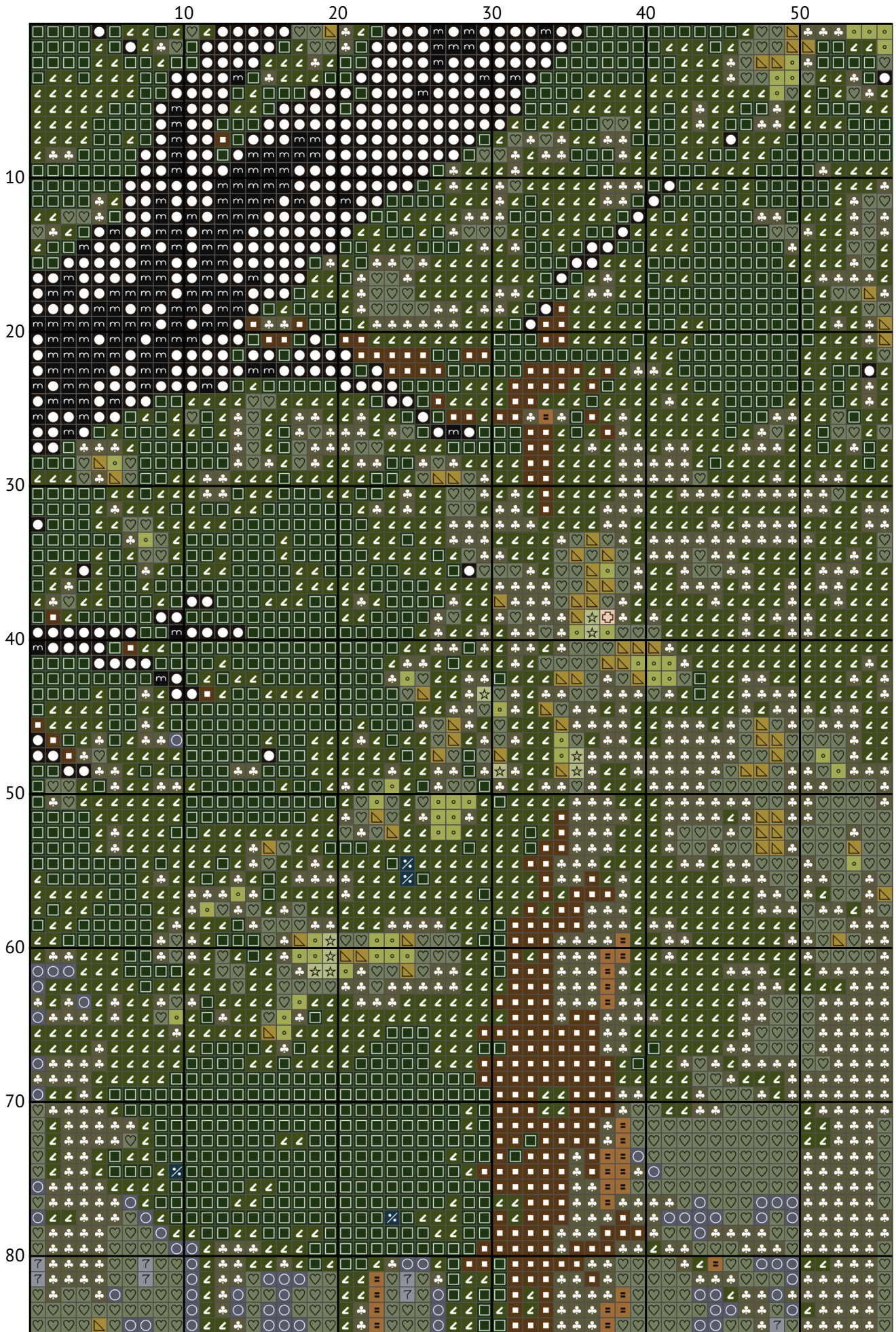
Little Red Riding Hood

Cross stitch chart



Design size: 200 x 200 stitches

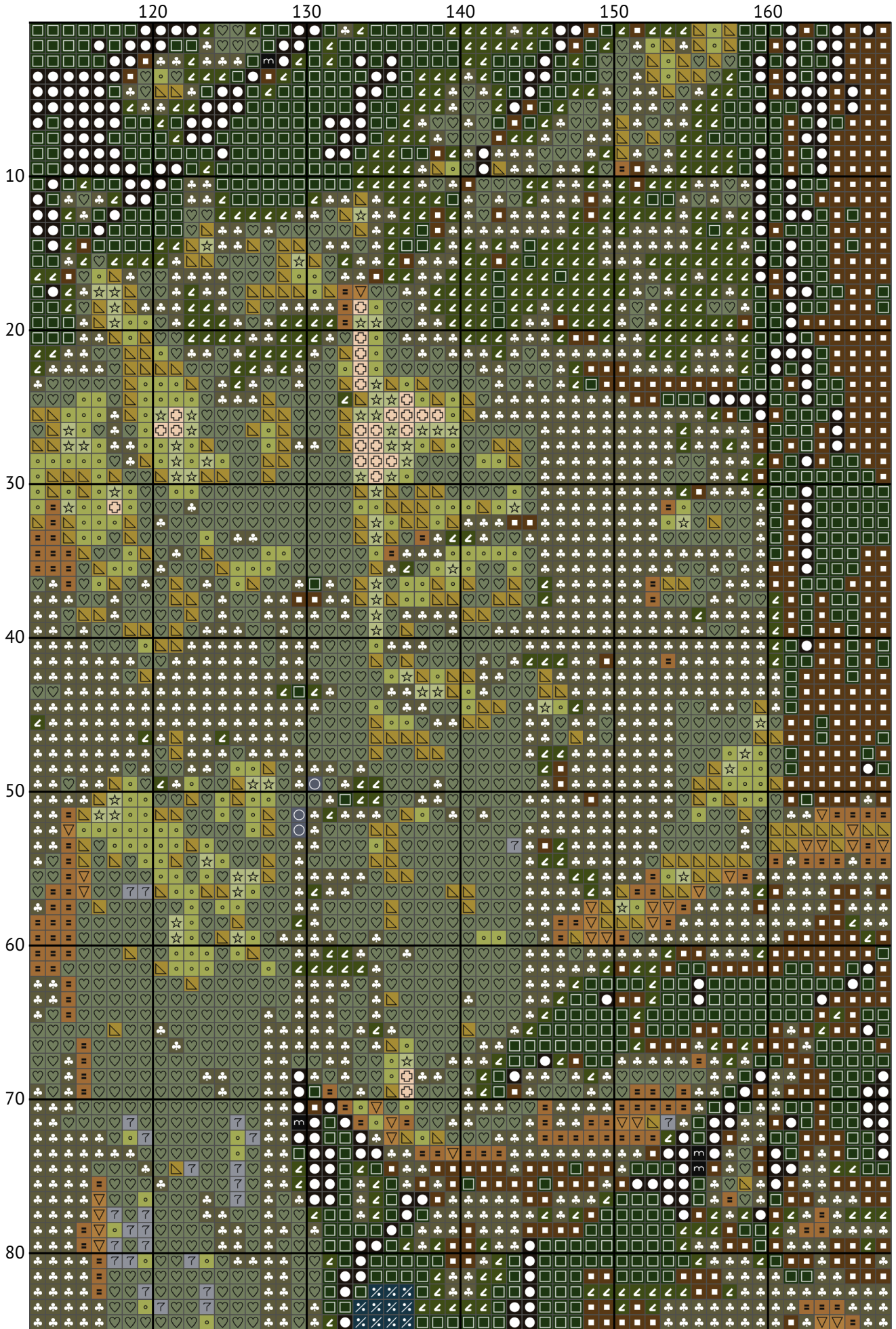
Little Red Riding Hood



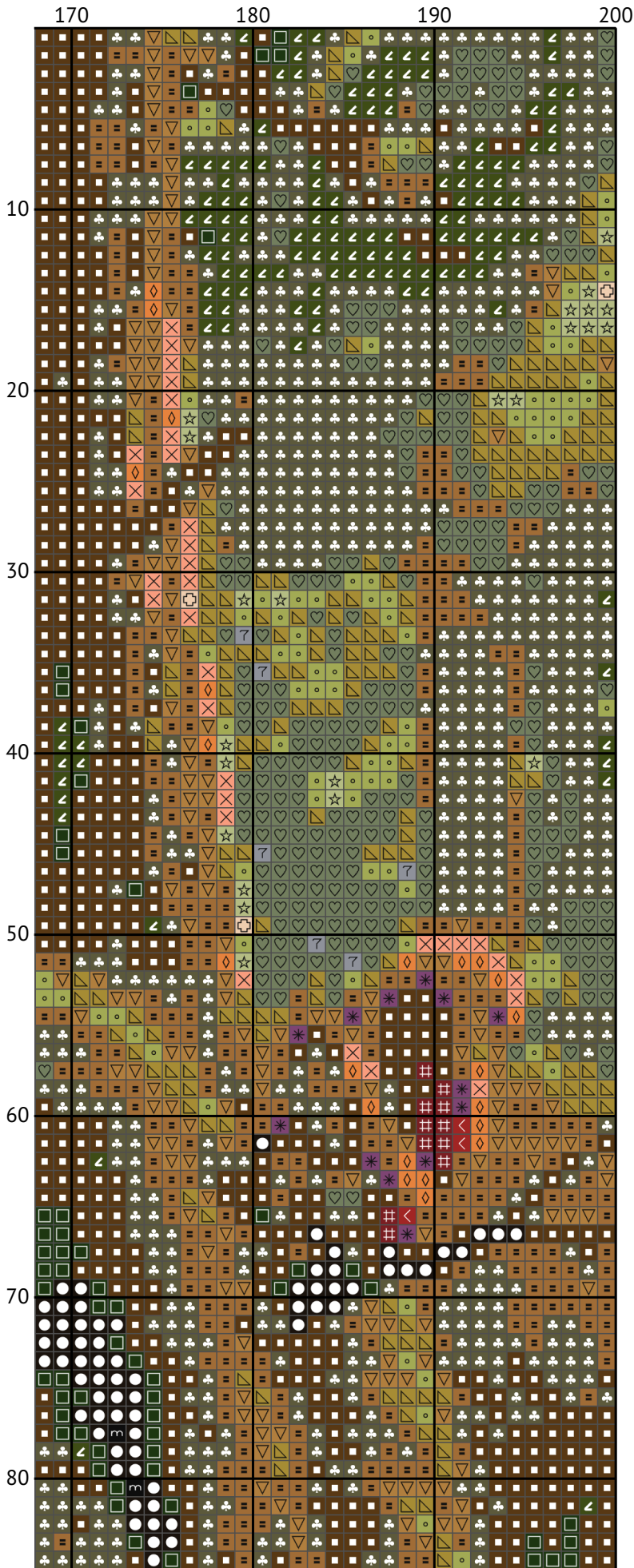
Little Red Riding Hood



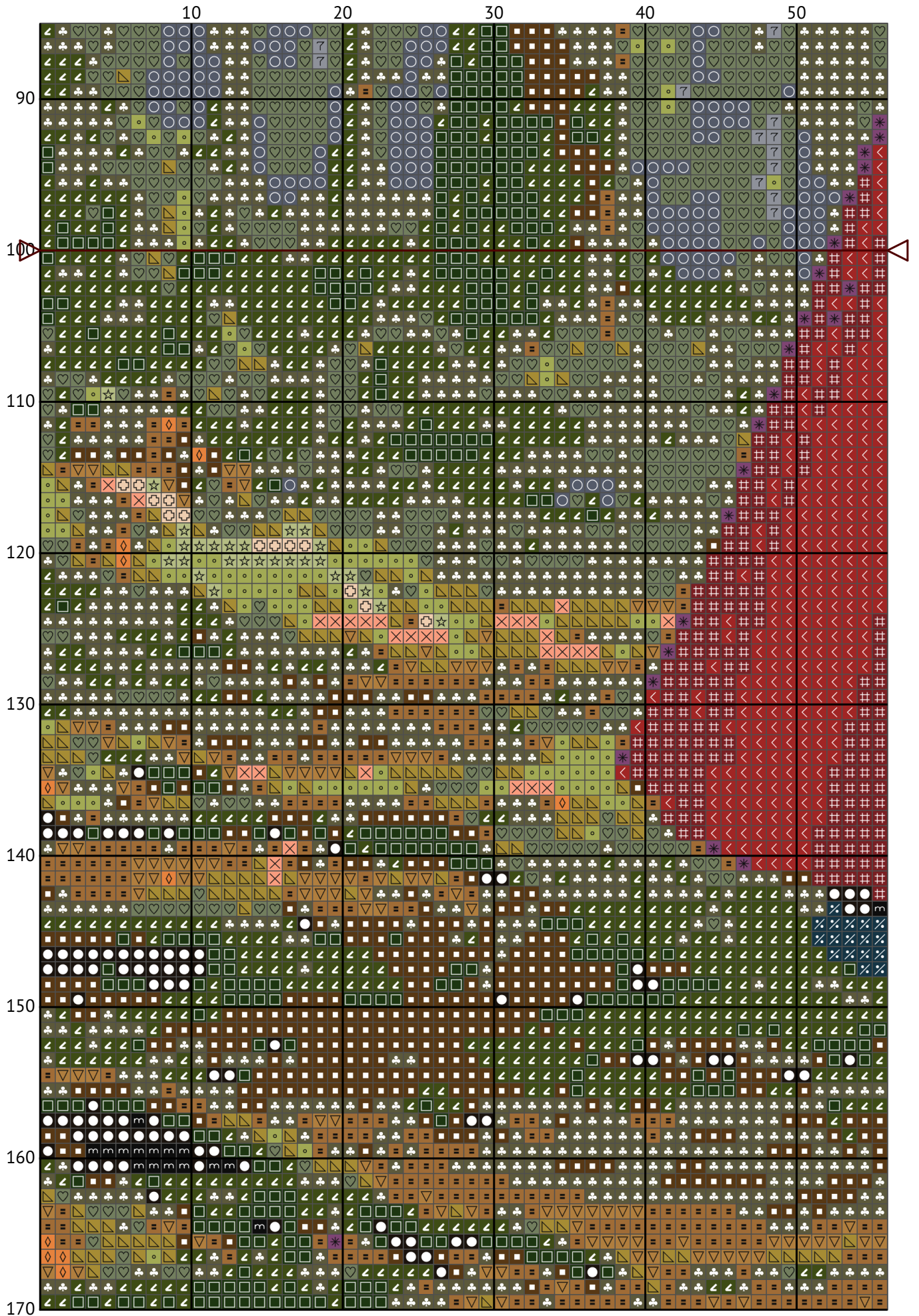
Little Red Riding Hood



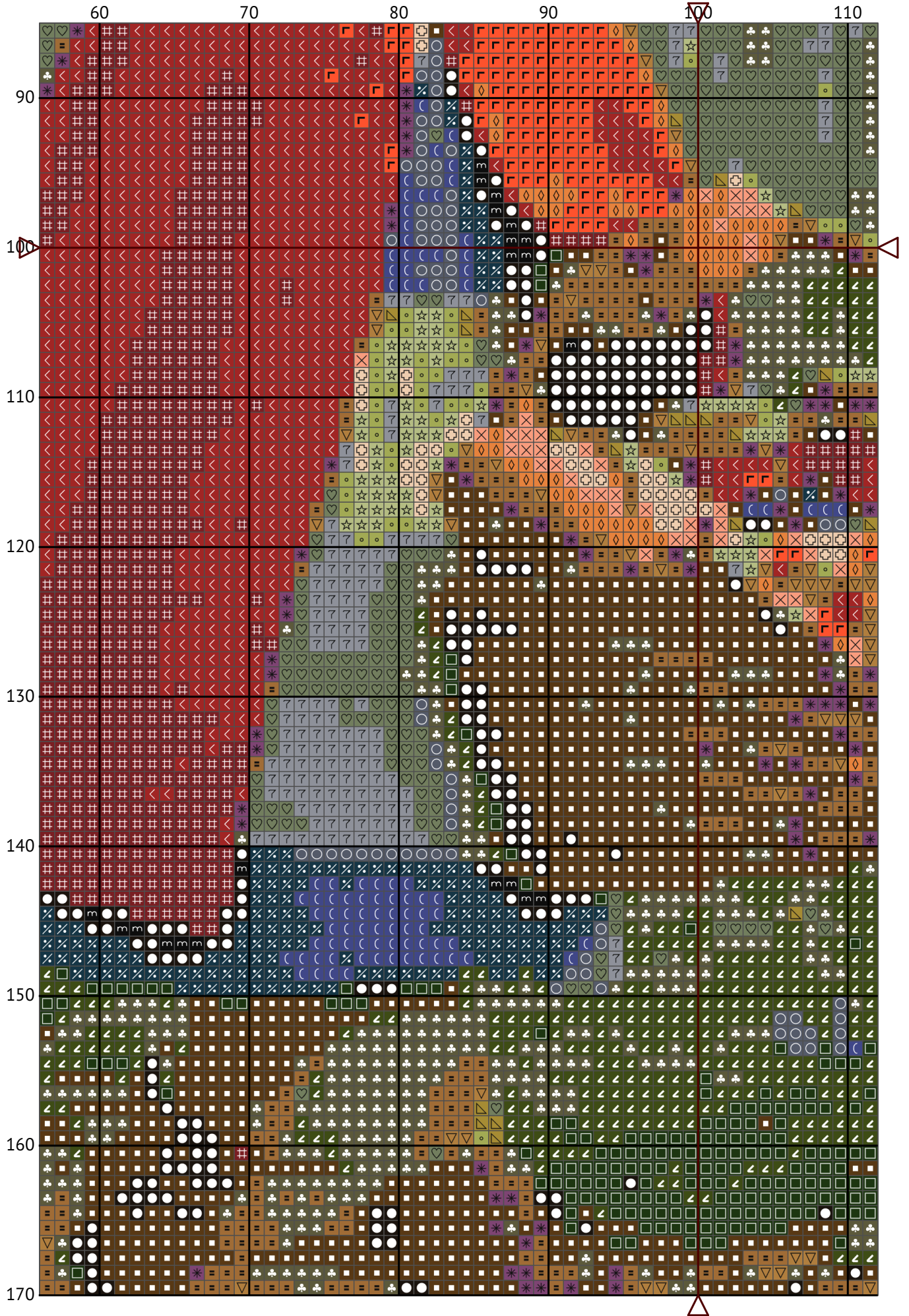
Little Red Riding Hood



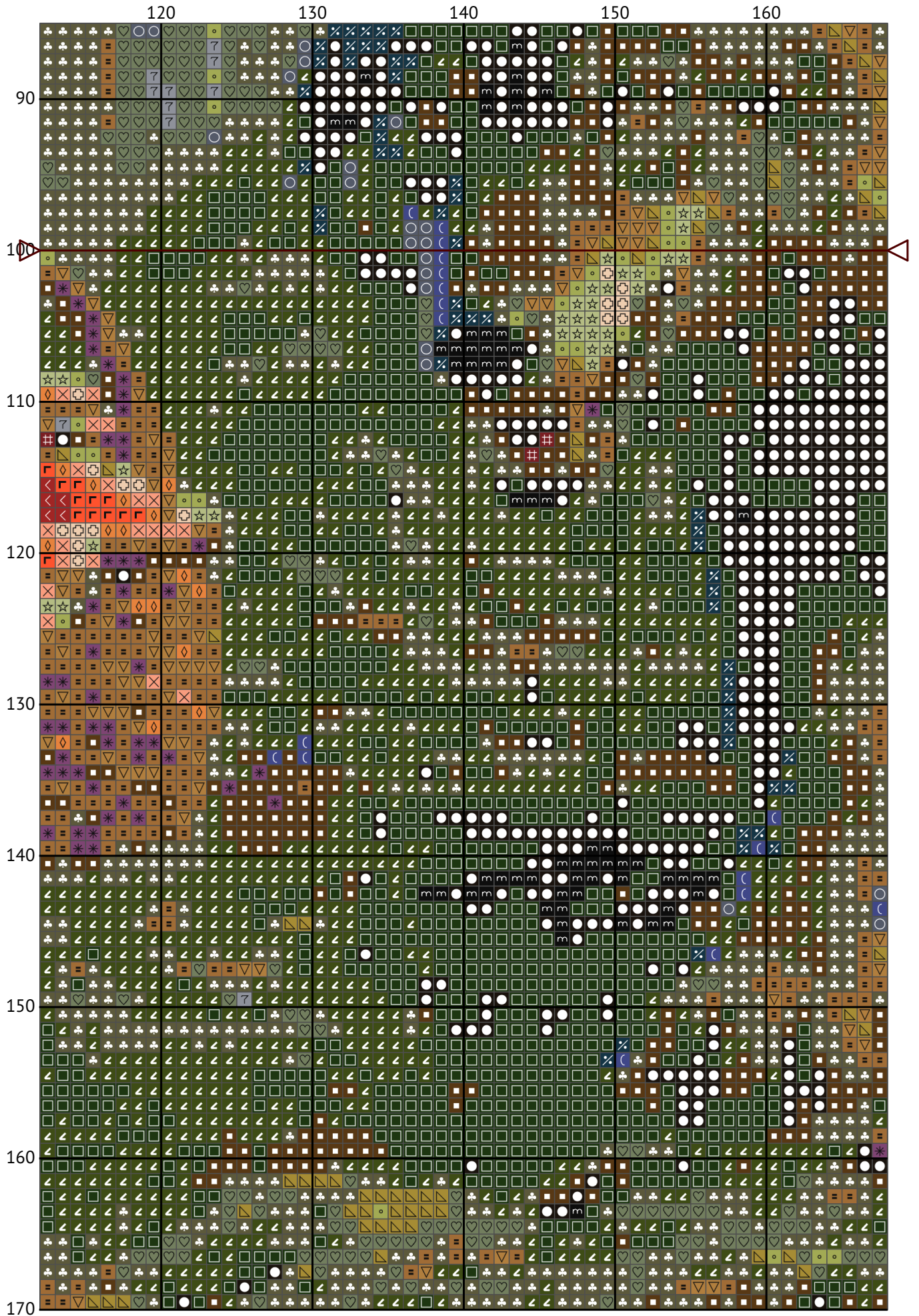
Little Red Riding Hood



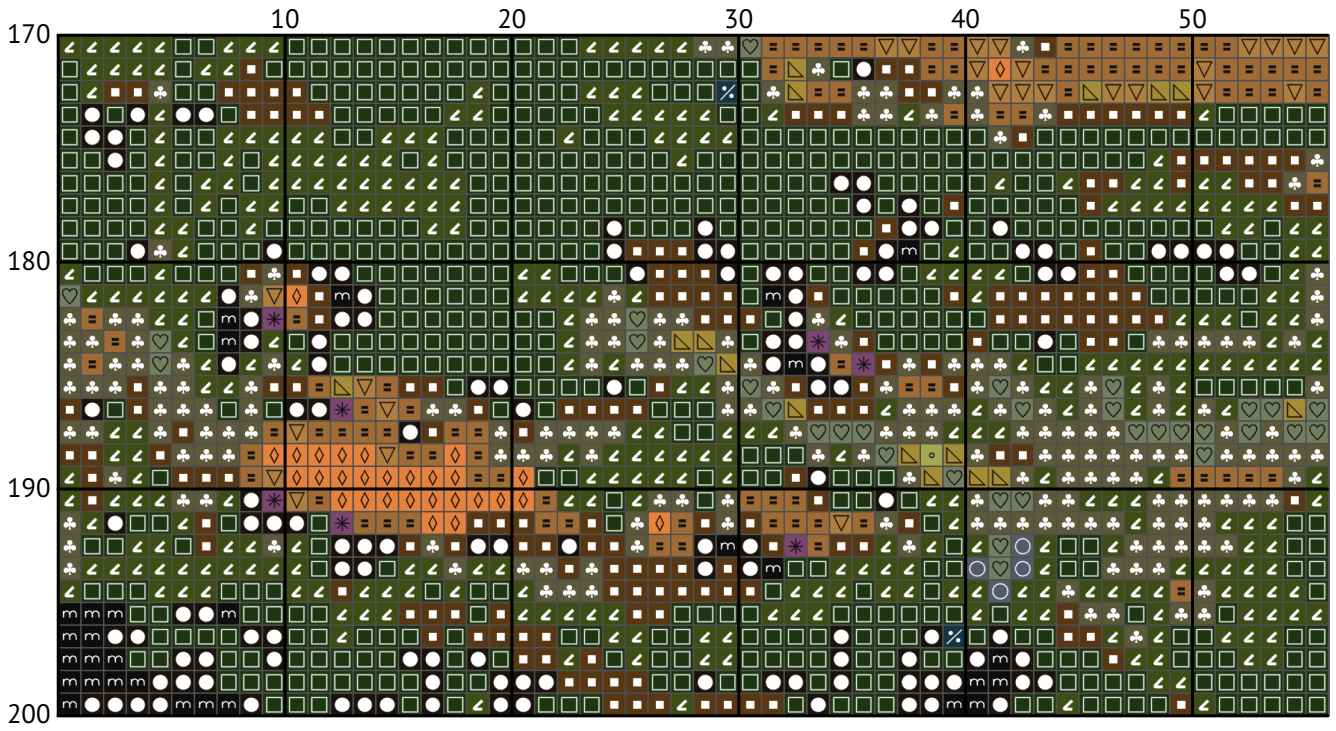
Little Red Riding Hood



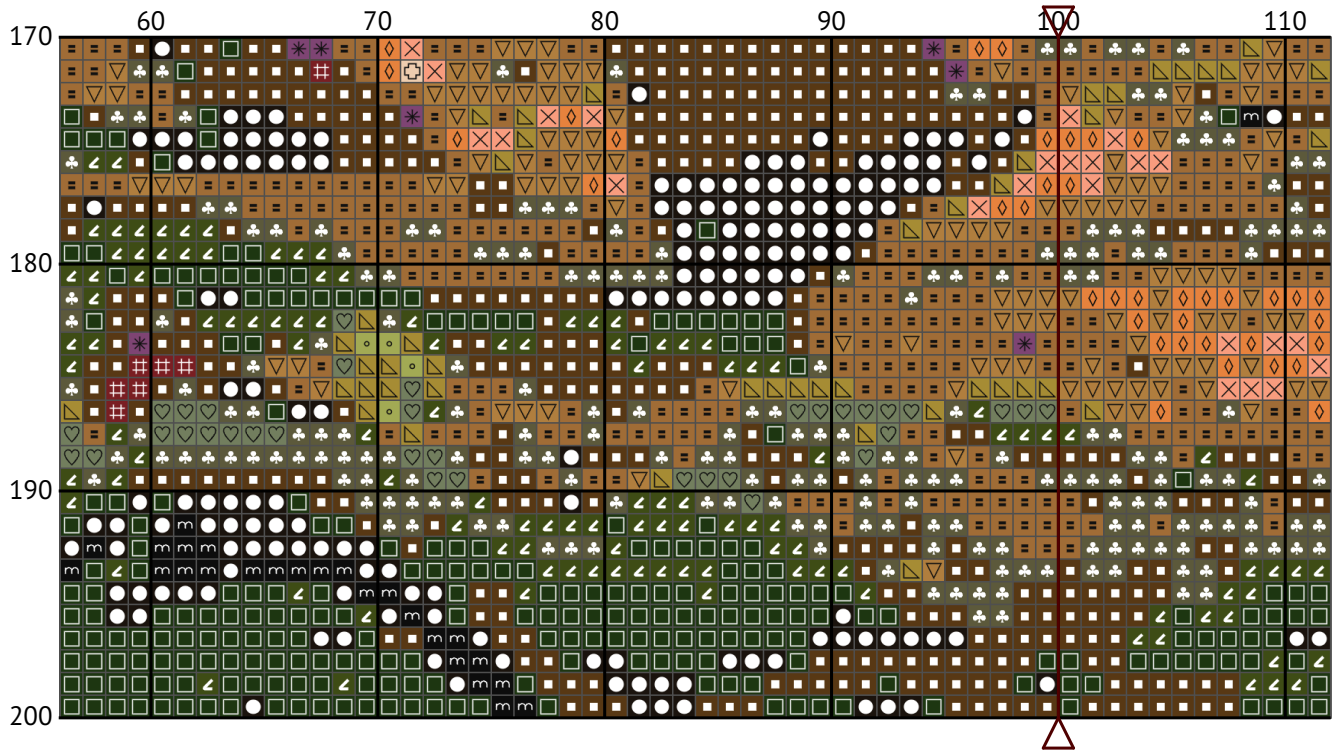
Little Red Riding Hood



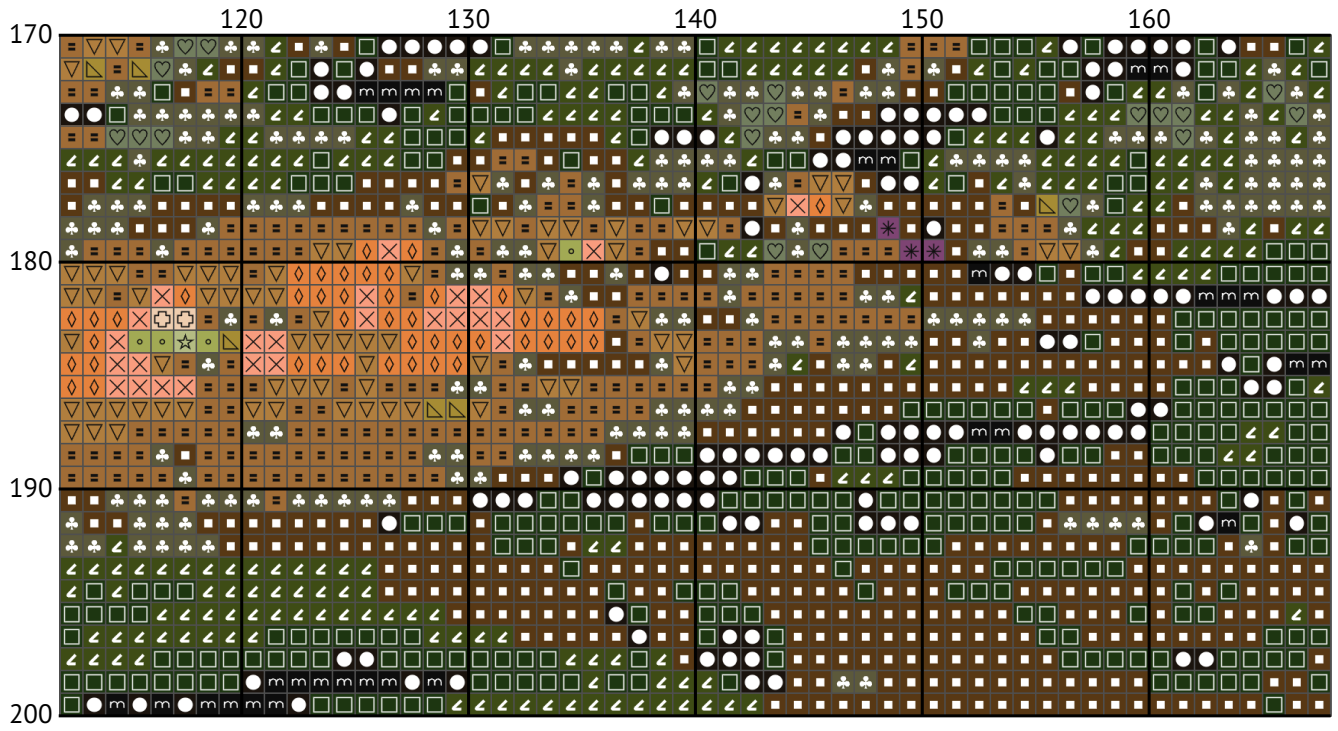
Little Red Riding Hood



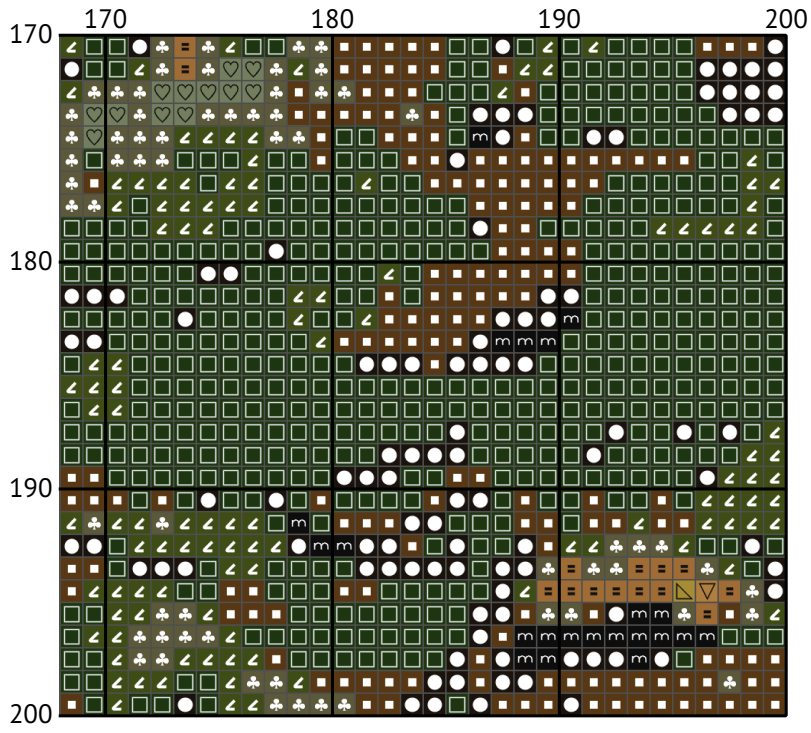
Little Red Riding Hood































Little Red Riding Hood



Little Red Riding Hood



Little Red Riding Hood
Floss list for crosses (DMC)

N	Symbol	Number	Name	Stitches
1		 DMC 03	Tin - Medium	244
2		 DMC 22	Alizarin	1258
3		 DMC 167	Yellow Beige - Very Dark	2177
4		 DMC 221	Shell Pink - Very Dark	1107
5		 DMC 310	Black	528
6		 DMC 317	Pewter Gray	336
7		 DMC 469	Avocado Green	5461
8		 DMC 640	Beige Gray - Very Dark	7214
9		 DMC 734	Olive Green - Light	1134
10		 DMC 772	Yellow Green - Very Light	281
11		 DMC 869	Hazelnut Brown - Very Dark	4352
12		 DMC 948	Peach - Very Light	155
13		 DMC 977	Golden Brown - Light	338
14		 DMC 3022	Brown Gray - Medium	3894
15		 DMC 3340	Apricot - Medium	248
16		 DMC 3345	Hunter Green - Dark	6047
17		 DMC 3348	Yellow Green - Light	762
18		 DMC 3371	Black Brown	2733
19		 DMC 3807	Cornflower Blue	120
20		 DMC 3808	Turquoise - Ultra Very Dark	269
21		 DMC 3824	Apricot - Light	273
22		 DMC 3828	Hazelnut Brown	785
23		 DMC 3835	Grape - Medium	284