

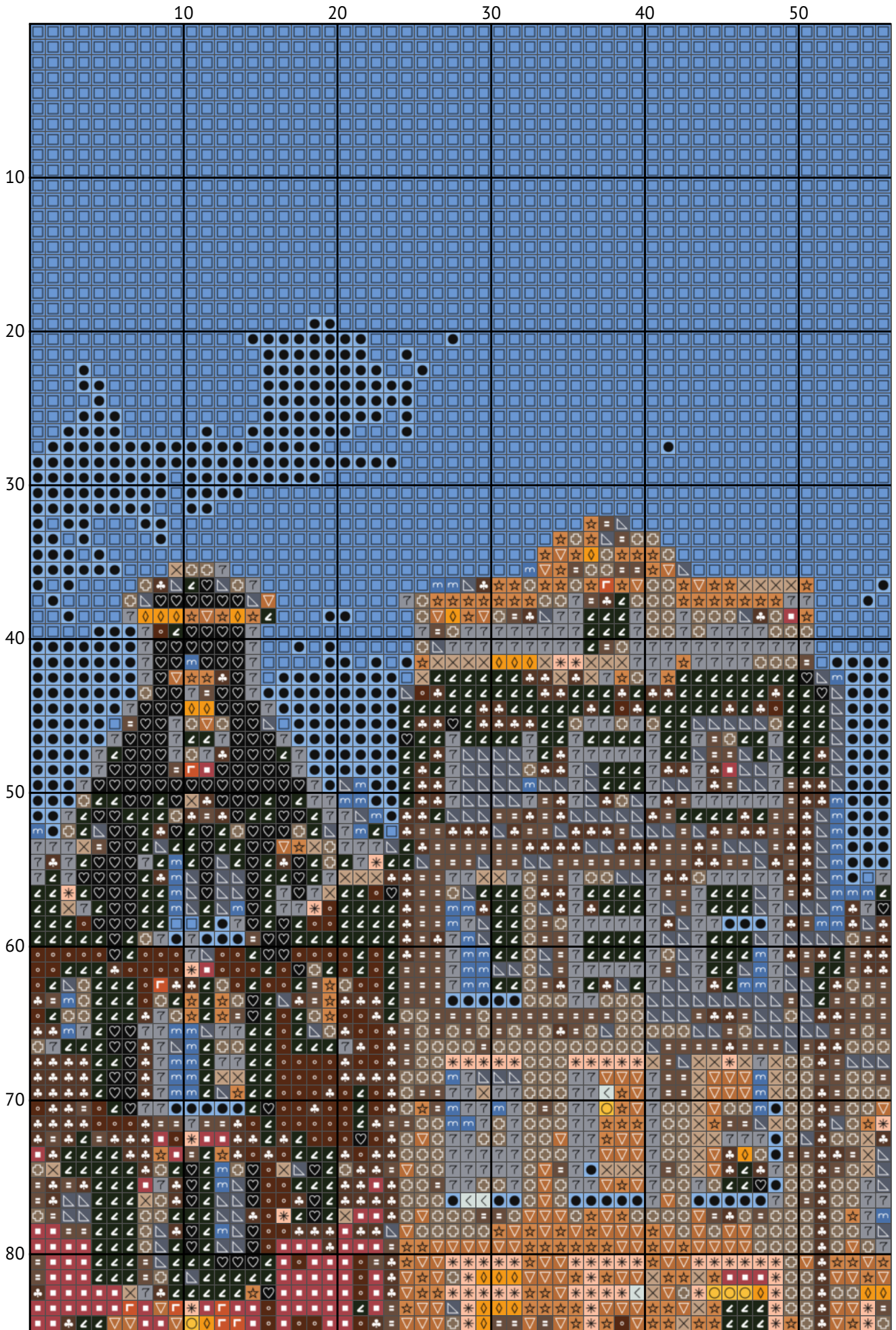
Dancing houses Amsterdam

Cross stitch chart

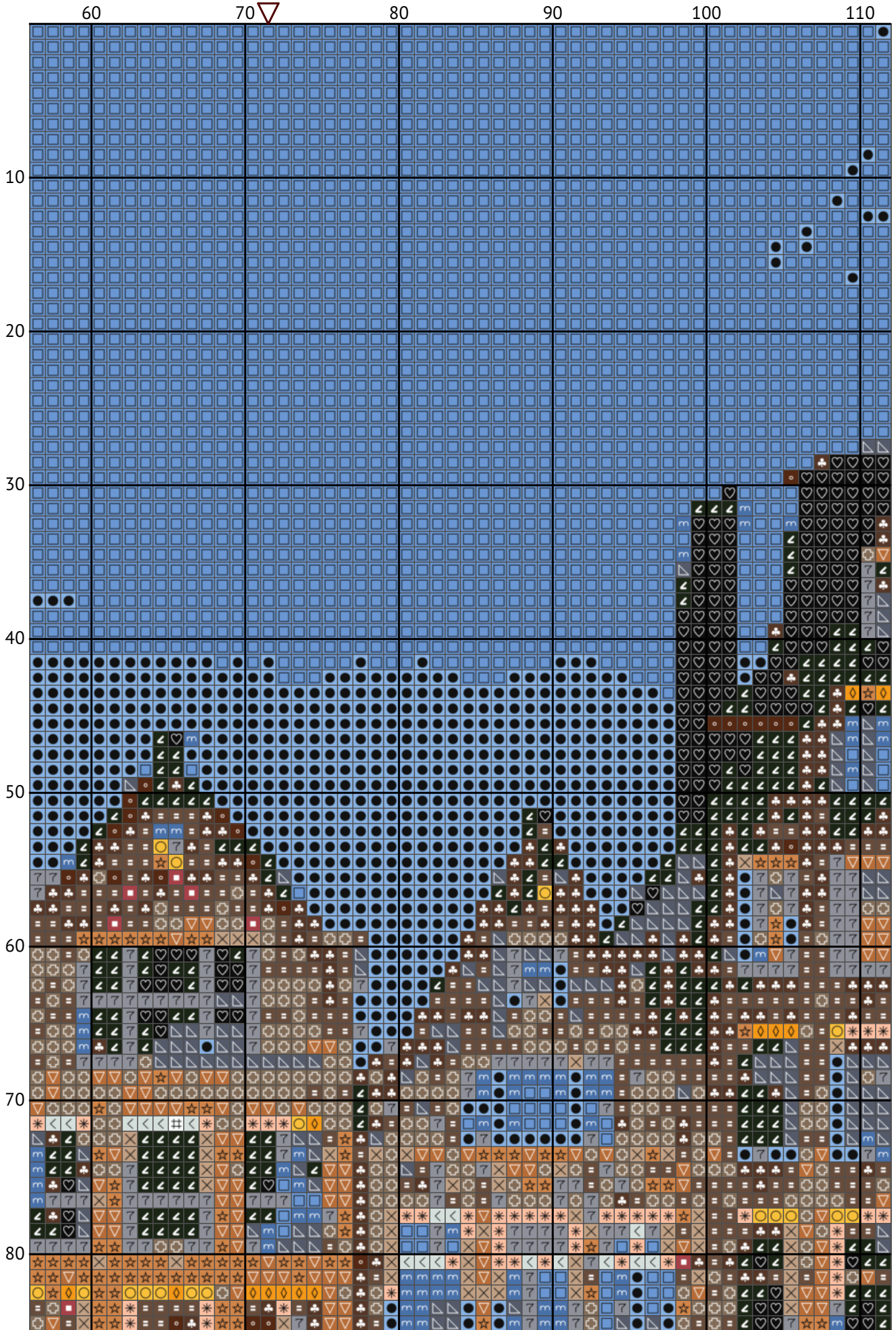


Design size: 143 x 200 stitches

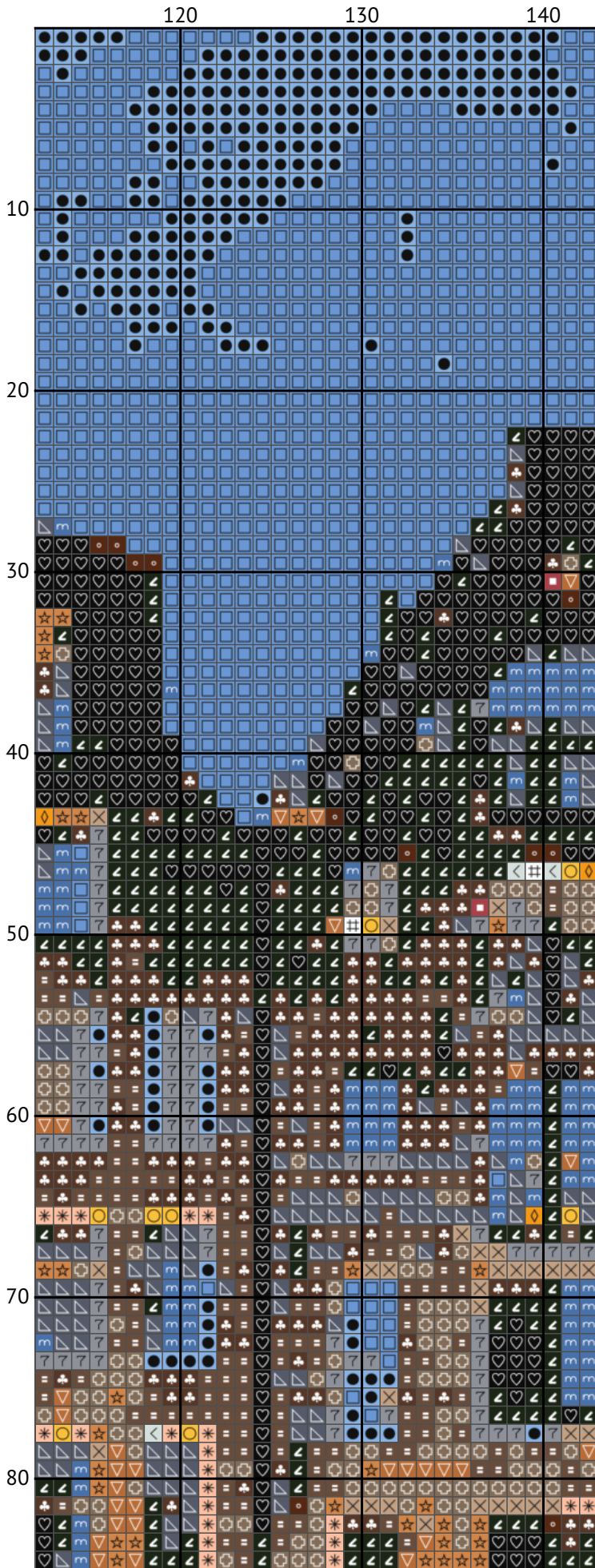
Dancing houses Amsterdam



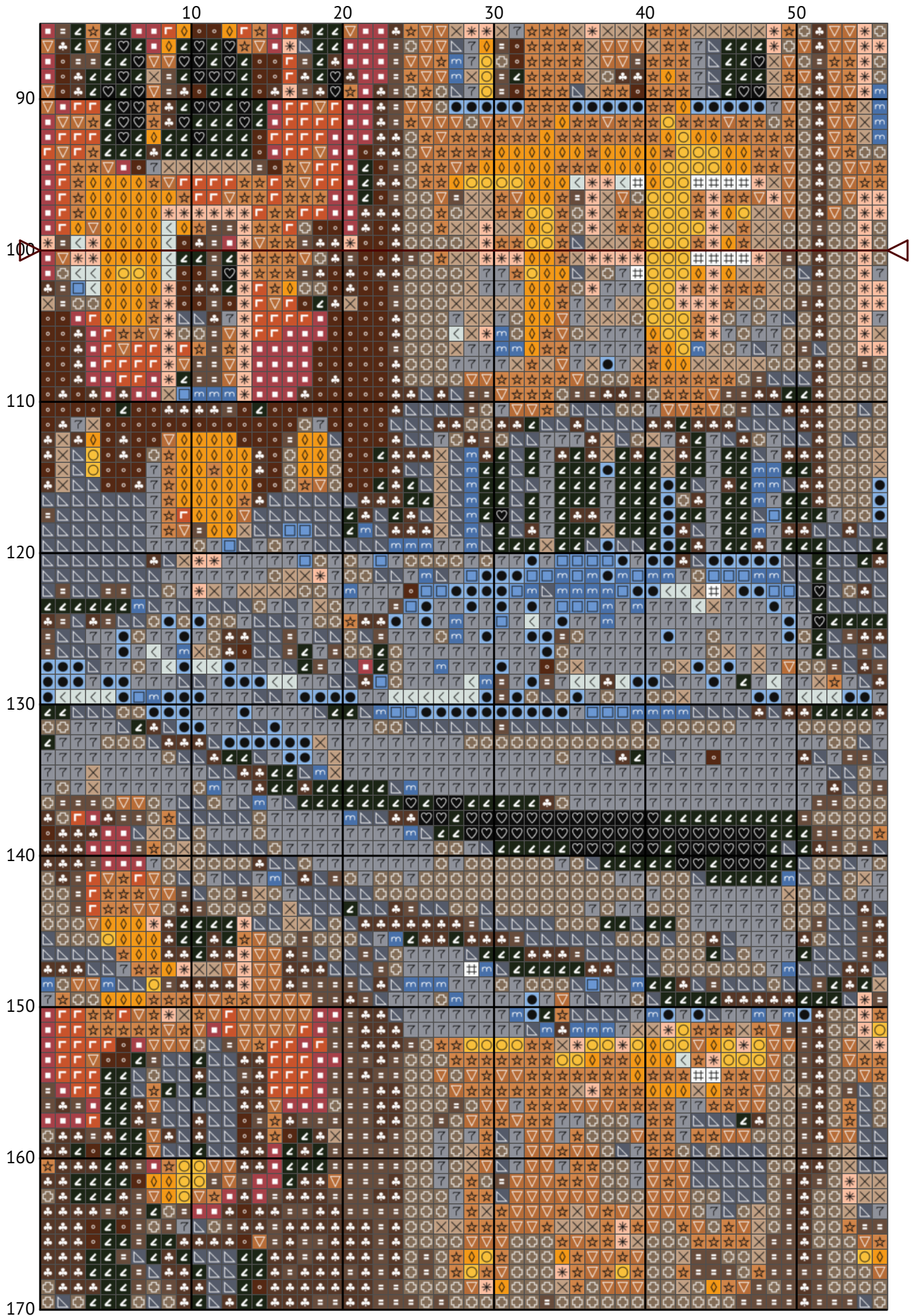
Dancing houses Amsterdam



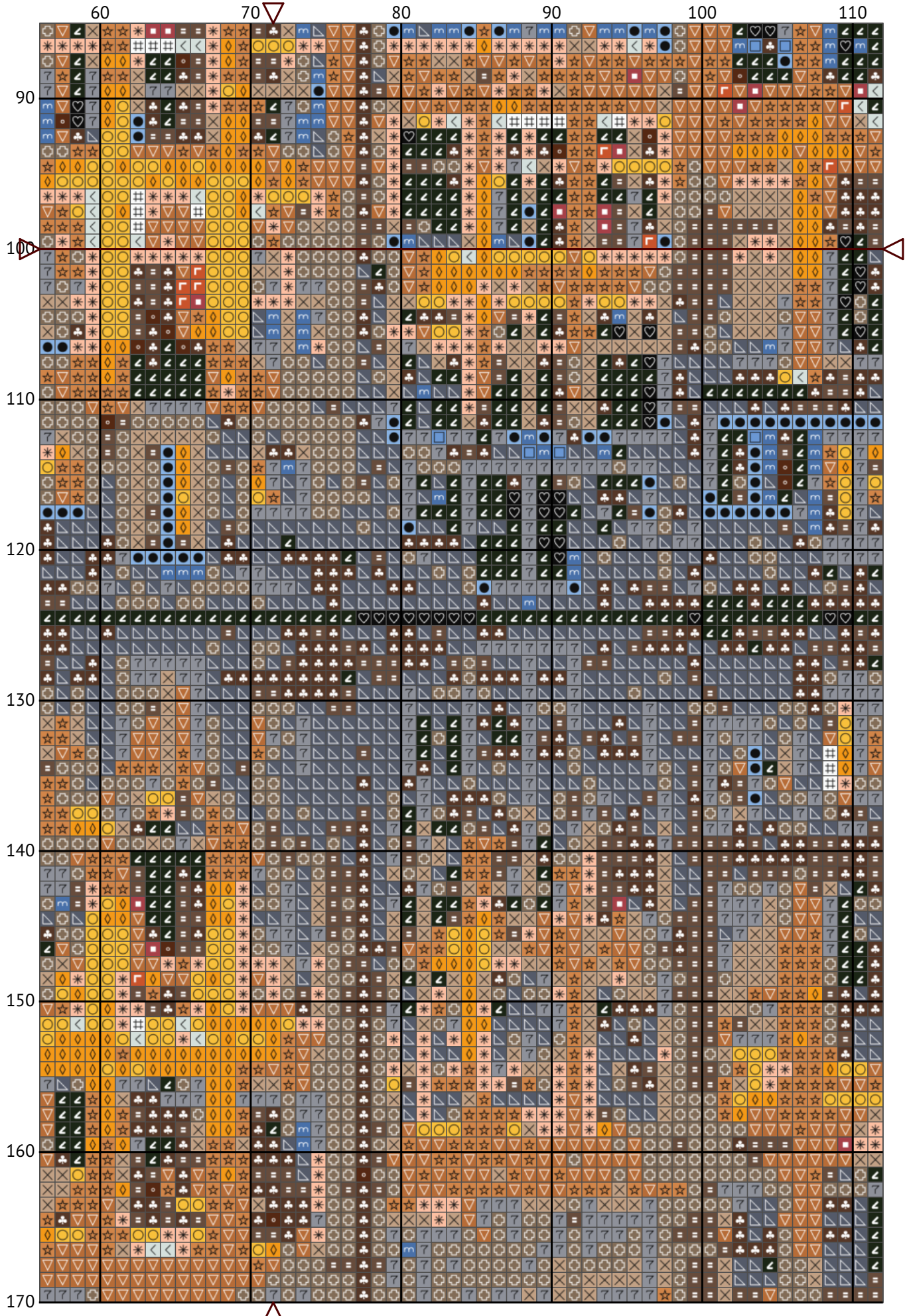
Dancing houses Amsterdam



Dancing houses Amsterdam

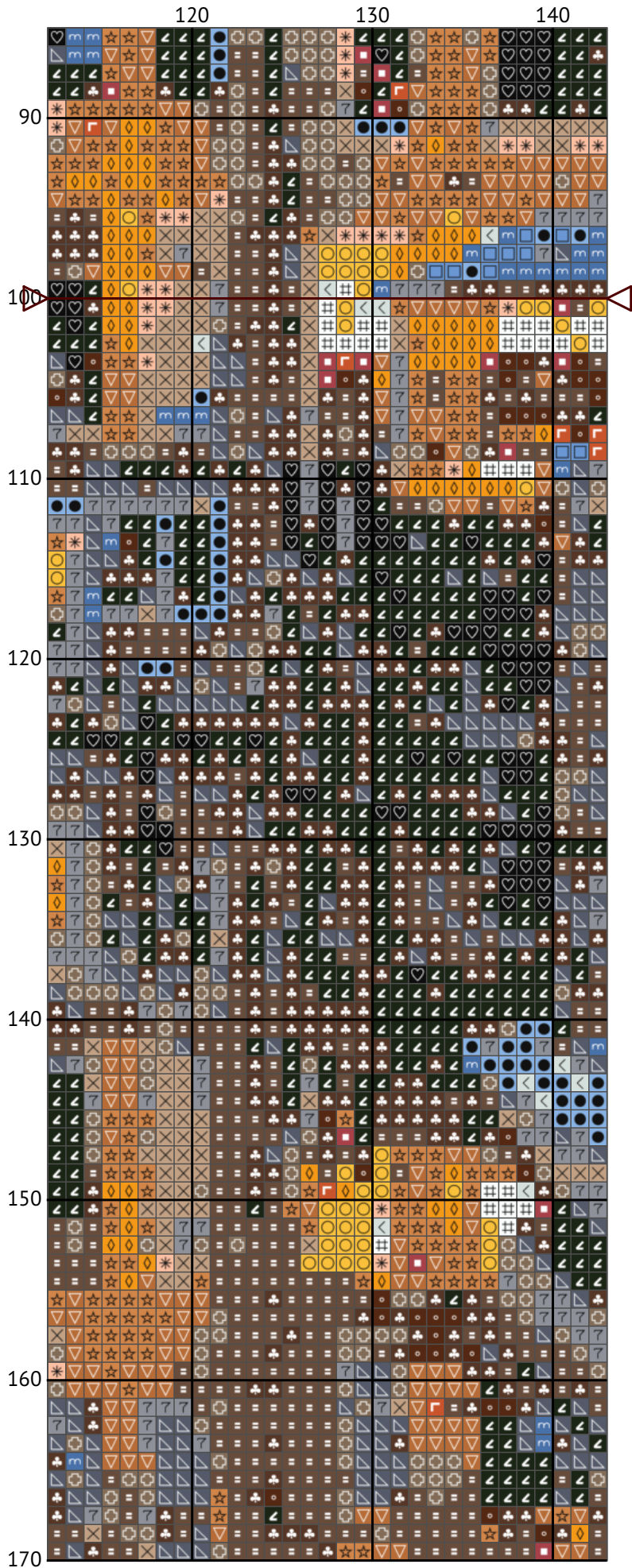


Dancing houses Amsterdam

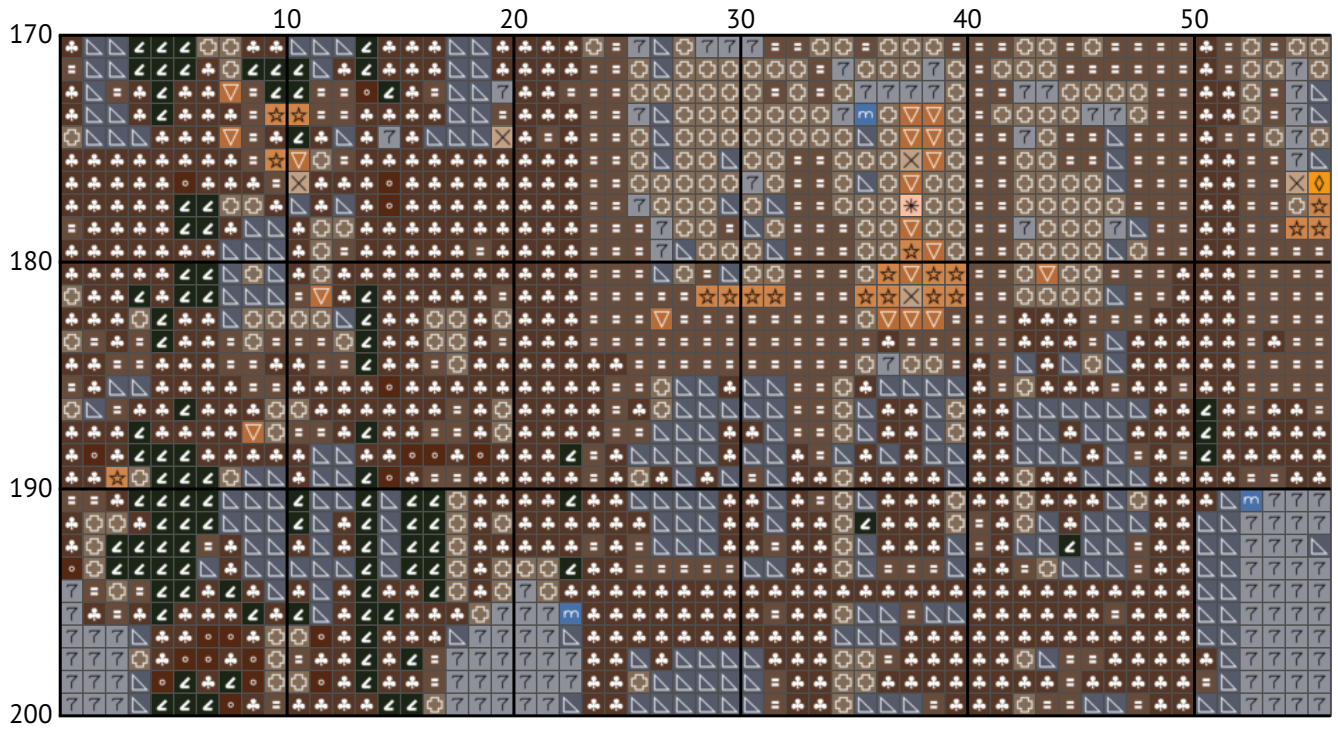


Needle-Thread.space

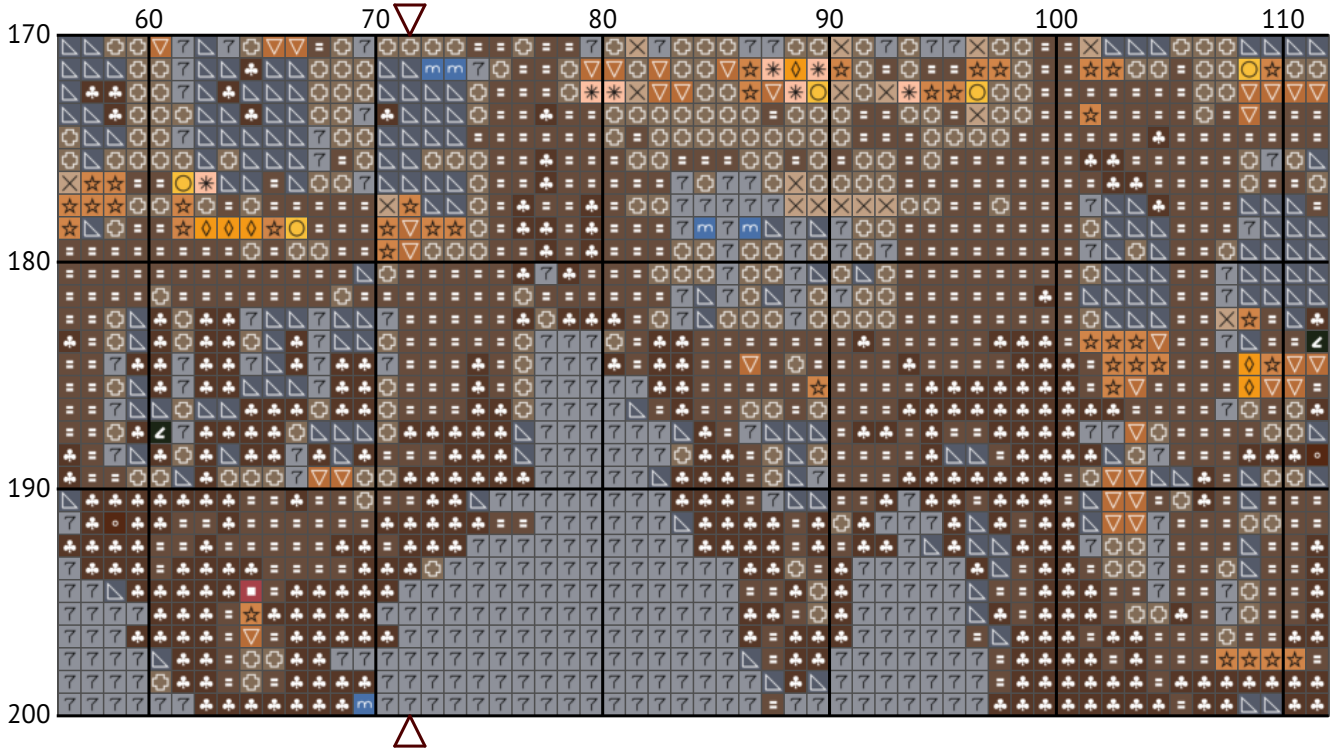
Dancing houses Amsterdam



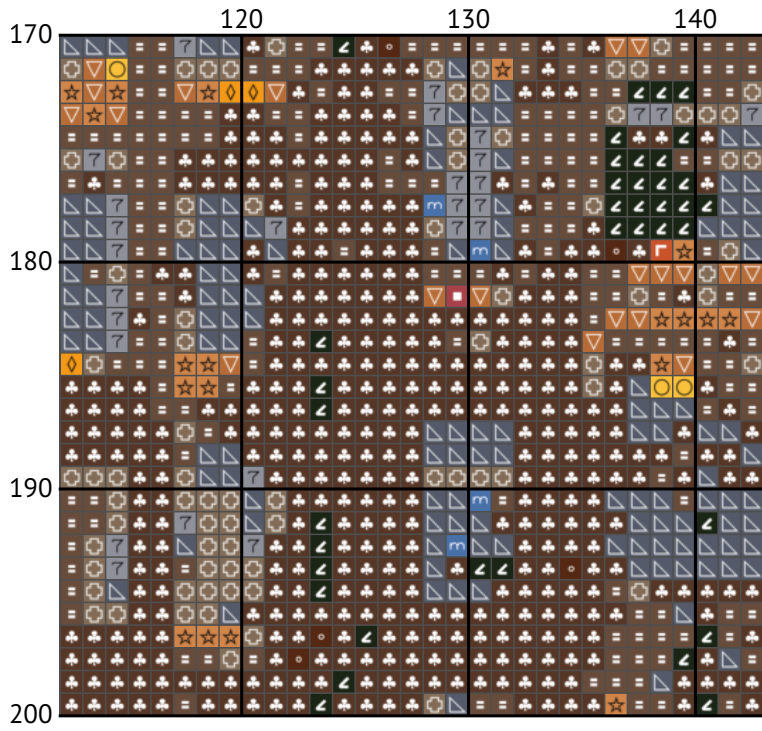
Dancing houses Amsterdam



Dancing houses Amsterdam



Dancing houses Amsterdam



Dancing houses Amsterdam
Floss list for crosses (DMC)

N	Symbol	Number	Name	Stitches
1			DMC 03 Tin - Medium	2119
2			DMC 07 Driftwood	2688
3			DMC 08 Driftwood - Dark	2663
4			DMC 310 Black	879
5			DMC 317 Pewter Gray	2456
6			DMC 334 Baby Blue - Medium	428
7			DMC 436 Tan	1094
8			DMC 437 Tan - Light	1275
9			DMC 743 Yellow - Medium	361
10			DMC 801 Coffee Brown - Dark	390
11			DMC 839 Beige Brown - Dark	3269
12			DMC 842 Beige Brown - Very Light	801
13			DMC 934 Avocado Green - Black	2128
14			DMC 967 Apricot - Very Light	517
15			DMC 972 Canary - Deep	485
16			DMC 3325 Baby Blue - Light	1535
17			DMC 3722 Shell Pink - Medium	242
18			DMC 3755 Baby Blue	4976
19			DMC 3756 Baby Blue - Ultra Very Light	100
20			DMC 3776 Mahogany - Light	132
21			DMC B5200 Snow White	62